

Youtube Channel 



Elon Musk Credits Trillionaire Status To Dave Ramsey Envelope System



Scholars Now Believe The Angel Saved Daniel By Distracting Lions With A Laser Pointer



Disclaimer: I am not a financial advisor, and do not make any recommendations on what to buy or sell.

The information offered here is for educational purposes only and does not constitute financial, legal or professional advice. NO ONE, including me, has any idea what the market will do.

Each person must determine their own risk profile, trading/investing style and take responsibility for any trades they make. Always do your own research and due diligence before making any investment decisions.

Past performance does not guarantee future results!

Most of the charts shown in this newsletter are courtesy of StockCharts.com and can be found on the website shown at the top of the page. Here is a link to the StockCharts.com pricing and if you sign up, I would appreciate if you used my email as a referral (danbyrd@comcast.net)

[Service Levels, Data Plans and Pricing | StockCharts.com](#)

MARKET BIAS MATRIX				
Day over Day & Week over Week Trend				
% Bullish Across All Asset Classes				
(Overall, Short Term, Mid Term, Long Term)				
Date	Overall %	ST %	MT%	LT%
6/17/2026	64%	52%	61%	78%
6/16/2026	65%	58%	61%	78%
6/15/2026	65%	59%	61%	78%
6/12/2026	63%	52%	61%	78%
6/11/2026	64%	52%	64%	78%
6/10/2026	64%	52%	65%	78%
6/9/2026	67%	55%	67%	78%
6/8/2026	67%	56%	68%	78%
6/5/2026	69%	62%	68%	78%
6/4/2026	71%	62%	74%	78%
6/3/2026	72%	62%	76%	78%
6/2/2026	72%	62%	78%	78%
6/1/2026	73%	64%	79%	78%
5/29/2026	74%	67%	79%	78%
5/28/2026	76%	72%	79%	78%
5/27/2026	76%	73%	79%	78%
5/26/2026	76%	69%	82%	78%
5/22/2026	77%	73%	82%	75%
5/21/2026	79%	67%	82%	75%
5/20/2026	74%	68%	81%	75%
5/19/2026	75%	68%	81%	75%
5/18/2026	77%	78%	82%	75%
5/15/2026	78%	78%	84%	76%
5/14/2026	78%	77%	84%	76%
5/13/2026	78%	79%	84%	76%
5/12/2026	80%	81%	84%	76%
5/11/2026	79%	80%	81%	76%
5/8/2026	78%	78%	81%	76%
5/7/2026	77%	77%	78%	76%
5/6/2026	78%	78%	80%	77%
5/5/2026	78%	78%	80%	76%
5/4/2026	78%	78%	80%	75%
5/1/2026	79%	82%	80%	75%
4/30/2026	79%	84%	80%	75%
4/29/2026	79%	82%	80%	75%
4/28/2026	79%	82%	80%	75%
4/27/2026	78%	81%	80%	75%
4/24/2026	79%	84%	80%	73%
4/23/2026	78%	82%	78%	75%
4/22/2026	77%	80%	77%	75%
4/21/2026	78%	84%	76%	75%
4/20/2026	77%	83%	72%	75%
4/17/2026	79%	85%	65%	75%
4/16/2026	70%	82%	51%	76%
4/15/2026	67%	78%	47%	76%
4/14/2026	66%	82%	41%	76%
4/13/2026	62%	75%	34%	76%
4/10/2026	60%	70%	33%	78%
4/9/2026	57%	57%	32%	78%
4/8/2026	55%	54%	32%	78%
4/7/2026	48%	37%	29%	78%
4/6/2026	46%	34%	25%	77%
4/1/2026	44%	29%	25%	77%
4/1/2026	43%	25%	27%	77%
3/31/2026	42%	22%	27%	77%
3/30/2026	42%	20%	27%	80%
3/27/2026	43%	22%	28%	78%
3/26/2026	43%	25%	29%	76%
3/25/2026	45%	28%	29%	77%
3/24/2026	44%	27%	29%	77%
3/23/2026	45%	27%	32%	77%
3/20/2026	47%	32%	32%	77%
3/19/2026	48%	34%	35%	77%

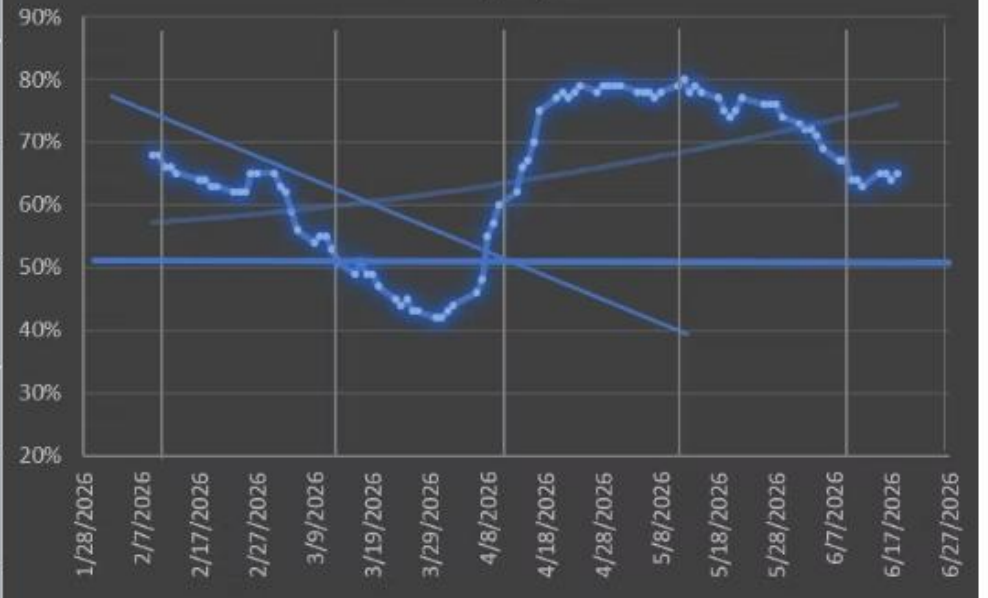
Fear/Greed Index

Current Reading **38 - Fear**

Previous Reading **33 - Fear**



Market Bias as of 6/18/26



Economic Calendar for Last Week:

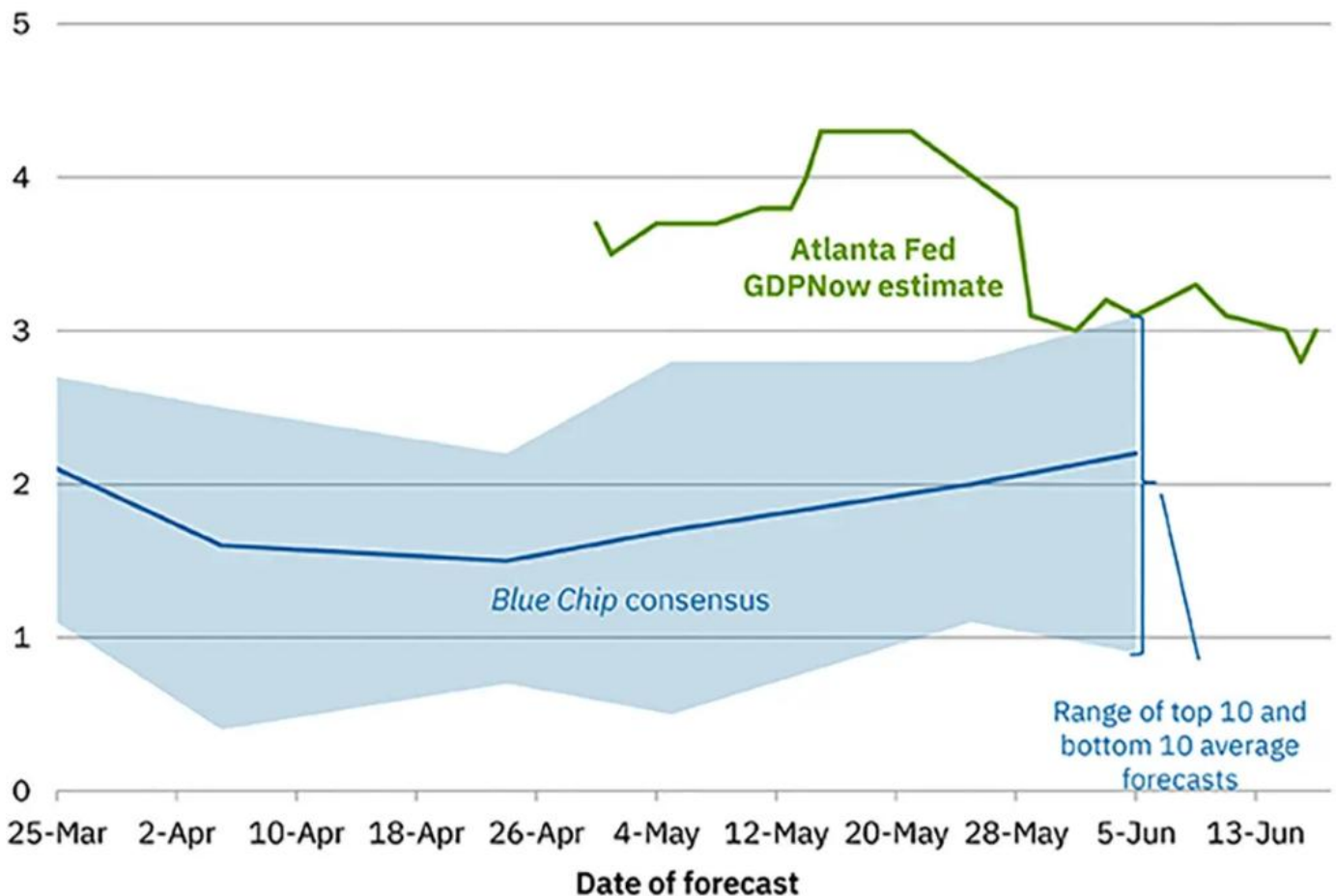
Time	Cur.	Event	Imp.	Actual	Forecast	Previous
Wednesday, June 17, 2026						
08:30	US	Retail Sales (MoM) (May)	★★★	0.9%	0.5%	0.4%
08:30	US	Core Retail Sales (MoM) (May)	★★★	0.8%	0.6%	0.7%
10:30	US	Crude Oil Inventories	★★★	-8.263M	-3.600M	-7.227M
10:45	US	U.S. President Trump Speaks	★★★			
14:00	US	Fed Interest Rate Decision	★★★	3.75%	3.75%	3.75%
14:00	US	FOMC Statement	★★★			
14:00	US	FOMC Economic Projections	★★★			
14:30	US	FOMC Press Conference	★★★			
Thursday, June 18, 2026						
08:30	US	Philadelphia Fed Manufacturing Index (Jun)	★★★	10.3	9.8	-0.4
08:30	US	Initial Jobless Claims	★★★	226K	225K	230K
Friday, June 19, 2026						
All Day	US	United States - Juneteenth	Holiday			

Economic Calendar for Next Week:

Time	Cur.	Event	Imp.	Actual	Forecast	Previous
Tuesday, June 23, 2026						
09:45	US	S&P Global Services PMI (Jun) P	★★★			50.7
09:45	US	S&P Global Manufacturing PMI (Jun) P	★★★			55.1
Wednesday, June 24, 2026						
10:00	US	New Home Sales (May)	★★★		640K	622K
10:30	US	Crude Oil Inventories	★★★			-8.263M
Thursday, June 25, 2026						
08:30	US	Core PCE Price Index (YoY) (May)	★★★			3.3%
08:30	US	Core PCE Price Index (MoM) (May)	★★★			0.2%
08:30	US	GDP (QoQ) (Q1)	★★★		1.6%	1.6%
08:30	US	Durable Goods Orders (MoM) (May) P	★★★			8.0%
08:30	US	Initial Jobless Claims	★★★			226K

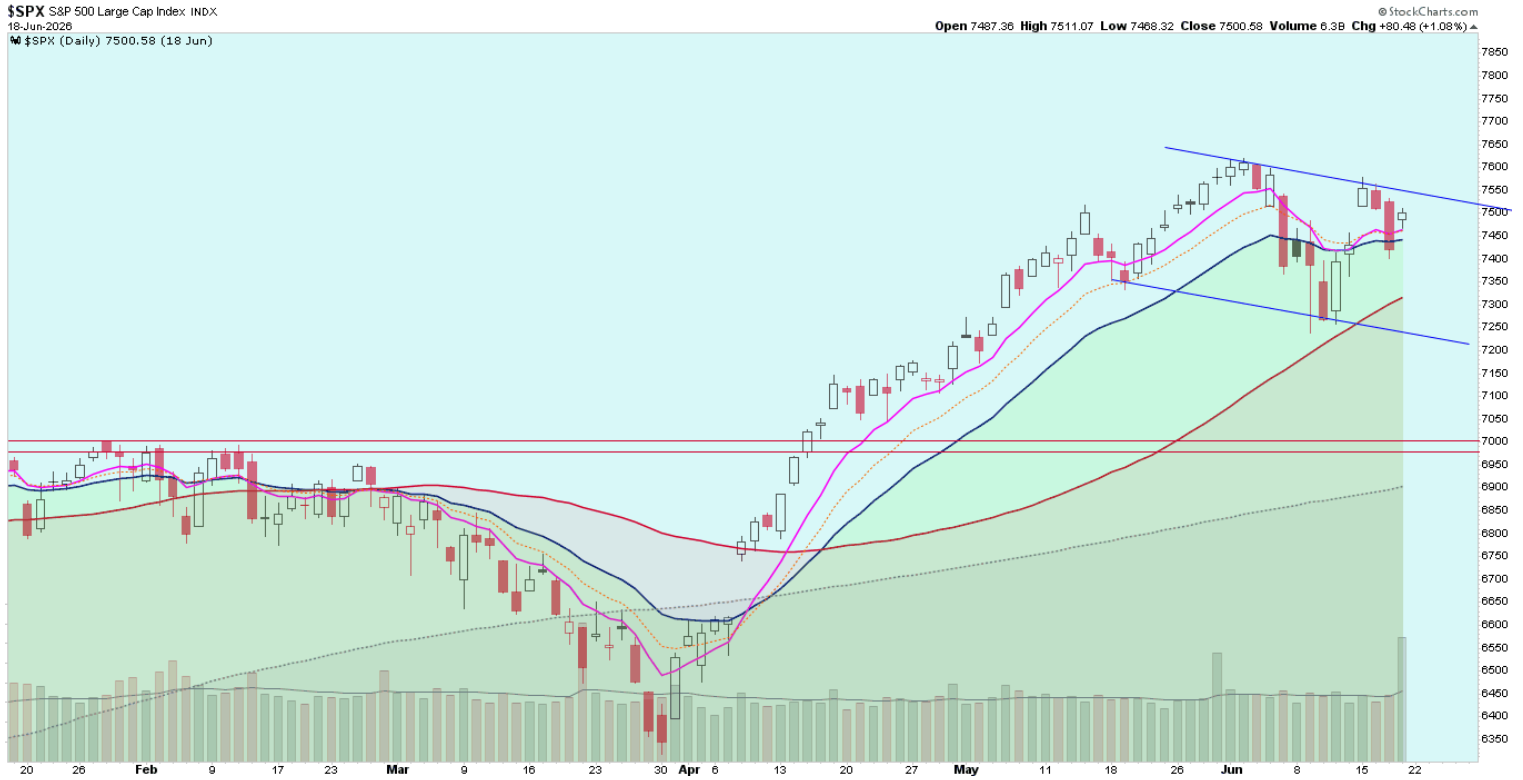
Probability of a rate hike is now set for September and another one in March.

CME FEDWATCH TOOL - AGGREGATED MEETING PROBABILITIES				
MEETING DATE	350-375	375-400	400-425	425-450
7/29/2026	61.52 %	38.48 %	0.00 %	0.00 %
9/16/2026	4.23 %	95.77 %	0.00 %	0.00 %
10/28/2026	0.00 %	86.52 %	13.48 %	0.00 %
12/9/2026	0.00 %	34.74 %	65.26 %	0.00 %
1/27/2027	0.00 %	17.52 %	82.48 %	0.00 %
3/17/2027	0.00 %	0.00 %	99.95 %	0.05 %
4/28/2027	0.00 %	8.52 %	91.48 %	0.00 %
6/9/2027	0.00 %	7.73 %	92.27 %	0.00 %
7/28/2027	0.00 %	36.52 %	63.48 %	0.00 %
9/15/2027	0.00 %	46.74 %	53.26 %	0.00 %
10/27/2027	0.00 %	60.52 %	39.48 %	0.00 %
12/8/2027	0.00 %	71.30 %	28.70 %	0.00 %

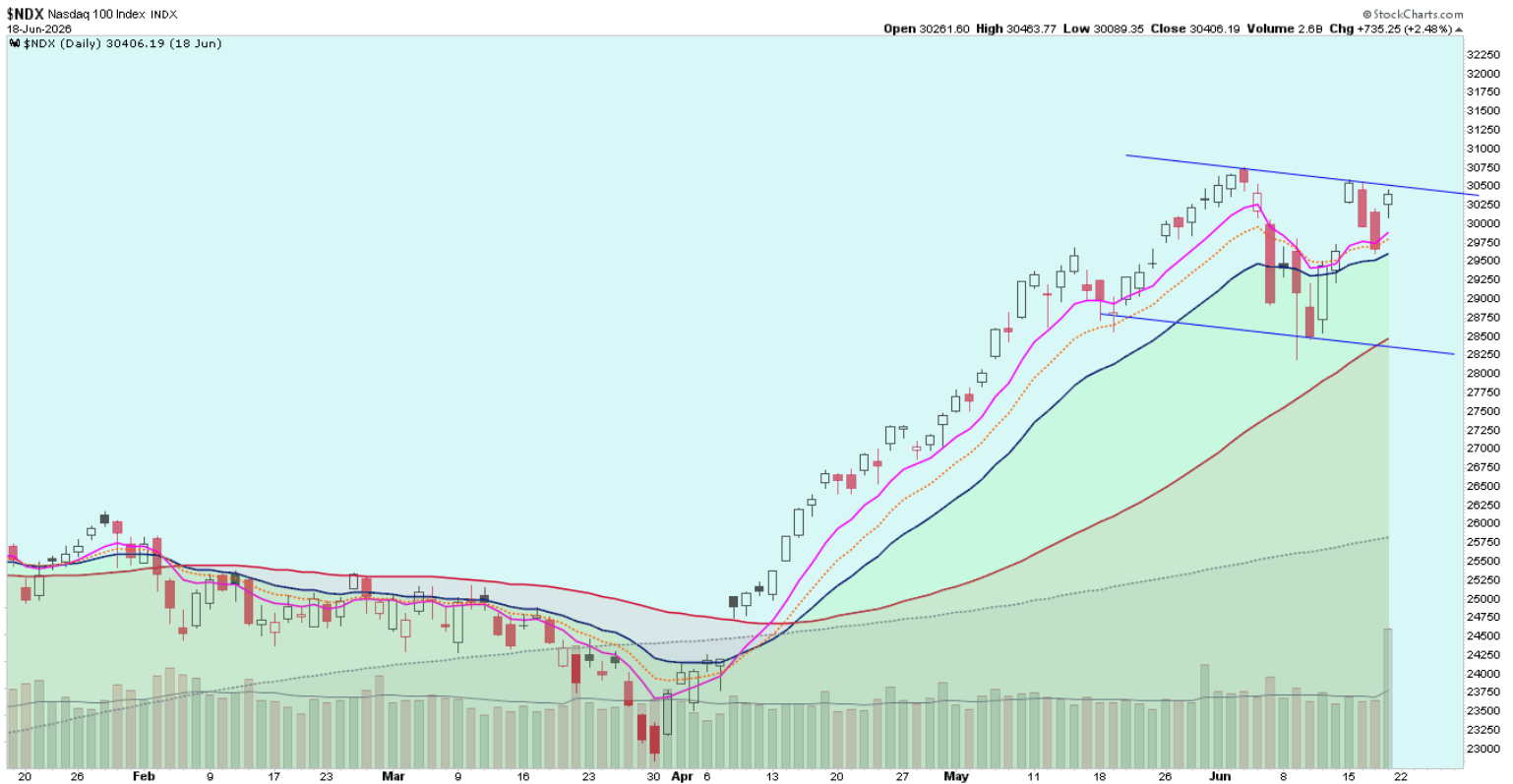


For the first time since this rally began in April, the S&P has created a lower low and a lower high. This could be the start of a downward channel and/or a Bull Flag. It would need to break above the previous high at about 7,600 to resume the rally.

A breakout of a Bull Flag pattern would have a measured move to 8,500.



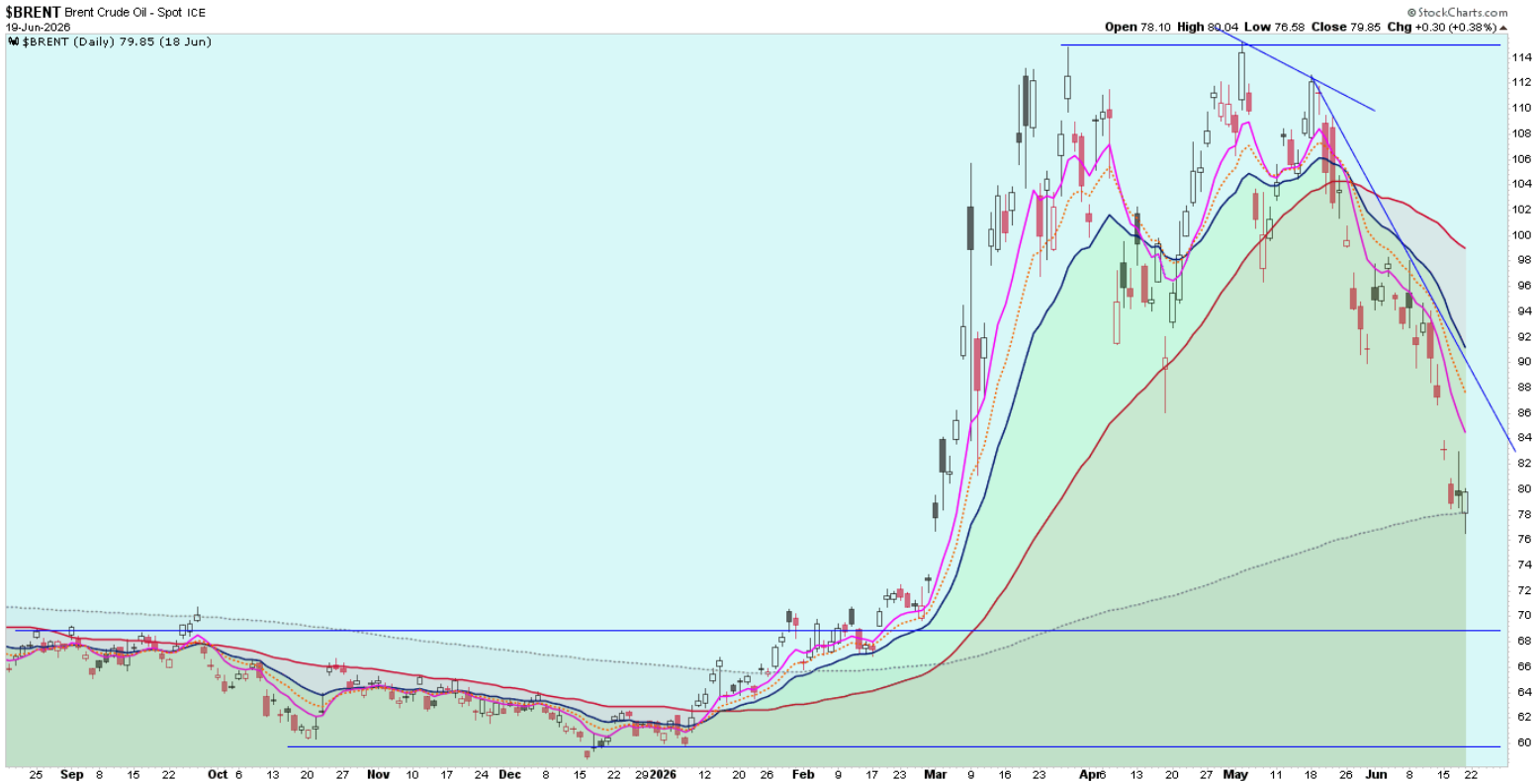
NDX:



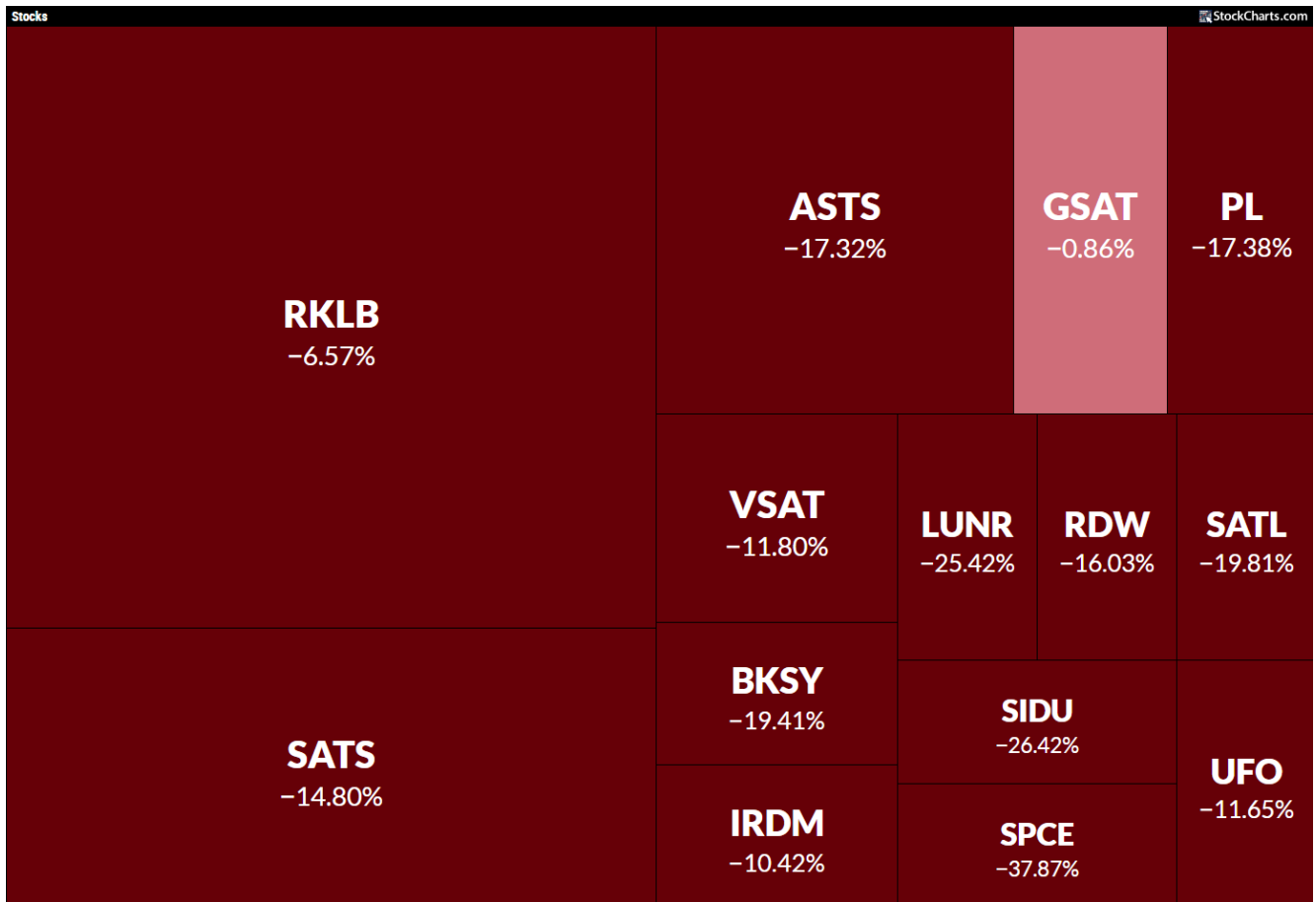
Gold continues falling, support at about \$360:



Oil – after a double top in March/May, sitting on the 200 MA and in a steep decline. Target is between \$60 - \$70.



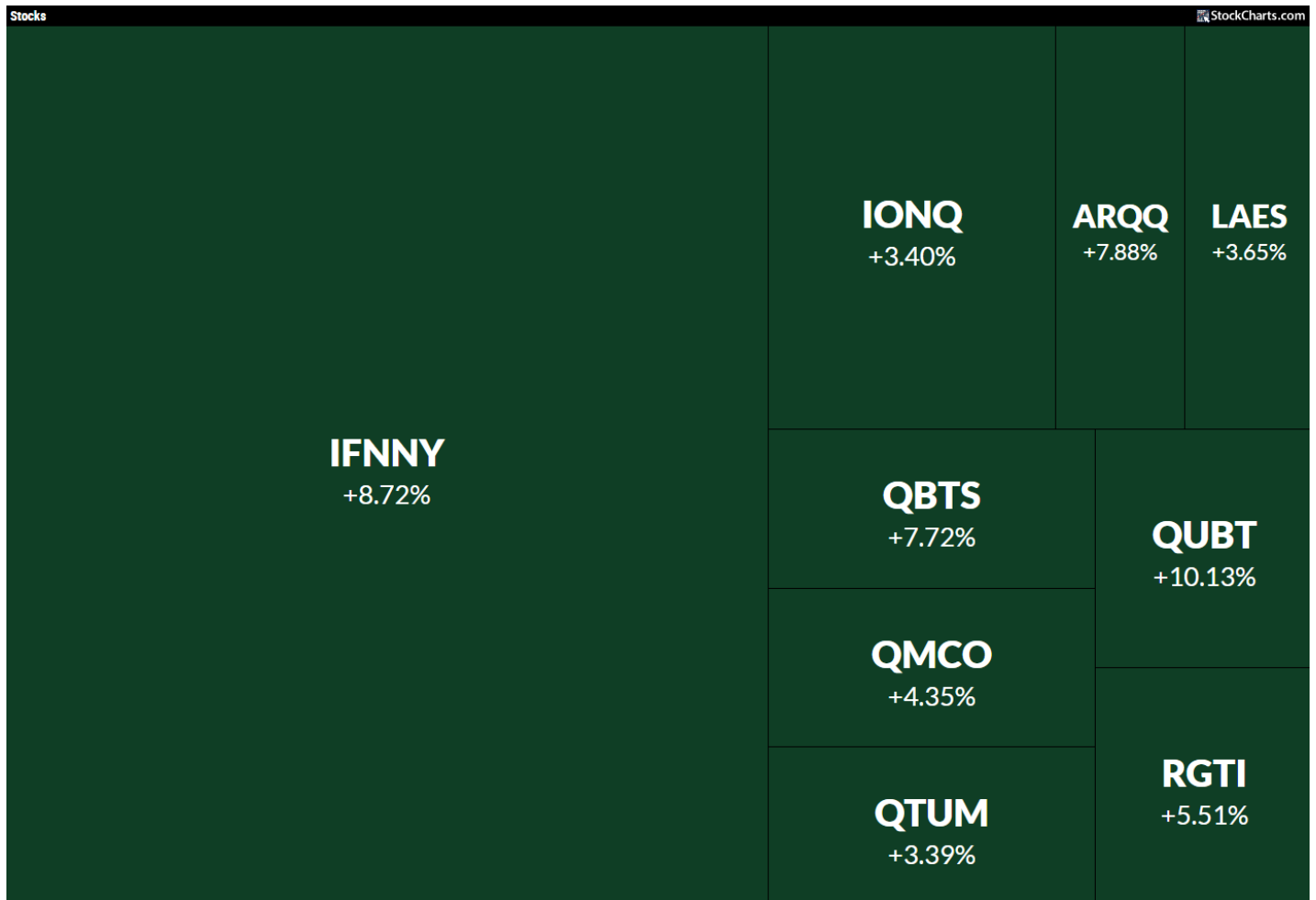
Here's a Market Carpet of Satellite/Space companies (SPCX does not yet have enough data)



And the SPCX chart after 1 week:



Market Carpet for Quantum stocks, by market cap:



TIMEFRAME

One Week Send Daily Report Send Weekly Report

NAME	SECTOR	INDUSTRY	LAST	CHG	% CHG	+/-	MARKET CAP	SCTR
ARQQ - Arqit Quantum Inc.	Technology	Software	24.38	+10.69	+78.09%		404.241 M	92.1
QNT - Quantinuum Inc.			69.80	+13.31	+23.56%			
QMCO - Quantum Corp.	Technology	Computer Hardware	15.60	+2.54	+19.45%		228.353 M	97.9
QUBT - Quantum Computing Inc.	Technology	Electronic Equipment	10.76	+0.85	+8.58%		2.427 B	51.2
XNDU - Xanadu Quantum Technologies Ord Shs			13.37	+0.91	+7.30%			
QTUM - Defiance Quantum ETF			167.97	+8.61	+5.40%		7.315 B	98.7
QBTS - D-Wave Quantum Inc.	Technology	Computer Hardware	24.69	+0.87	+3.65%		9.146 B	68.6
RGTI - Rigetti Computing, Inc.	Technology	Computer Hardware	21.36	+0.73	+3.54%		7.100 B	52.2
IFNNY - Infineon Technologies AG	Technology	Semiconductors	95.23	+3.08	+3.34%		122.170 B	96.9
IONQ - IonQ Inc.	Technology	Computer Hardware	56.55	-1.44	-2.48%		21.108 B	77.0
LAES - SEALSQ Corp.	Technology	Semiconductors	3.12	-0.08	-2.50%		620.955 M	33.9
INFQ - Infleqtion Inc.			13.53	-0.59	-4.18%		711.003 M	57.3

Combined, the six account for 24% of the long-term opportunity, with the remaining 76% attributed to larger companies such as [IBM](#) and Google, and private players including Alice & Bob and Pasqal.

[IonQ](#), the largest pure-play by market capitalization at \$21.19 billion with 2026 consensus revenue estimated at \$260 million, carries an implied market share of 11%.

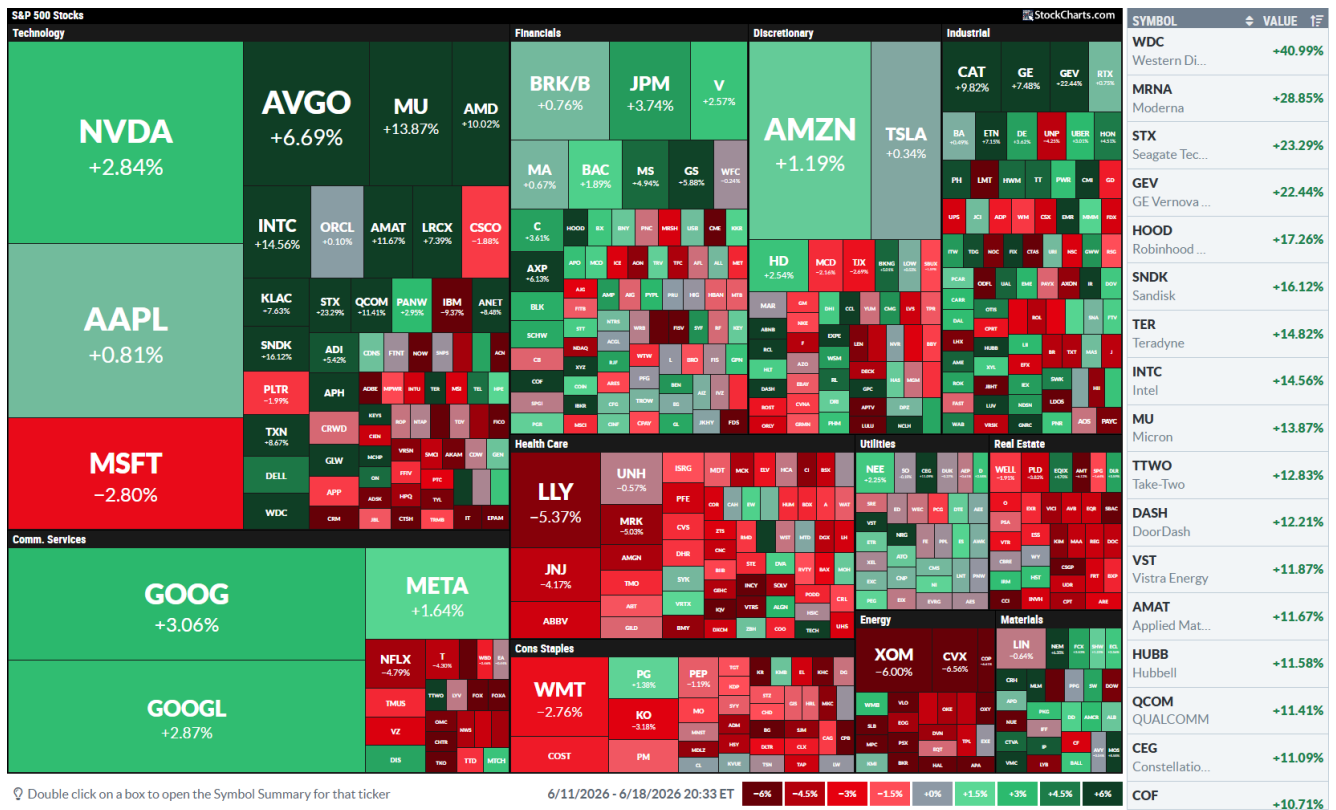
[D-Wave Quantum](#), at a market cap of \$8.75 billion and estimated 2026 revenue of \$43 million, implies 5% share. [Rigetti Computing](#), at a \$6.87 billion market cap and \$24 million estimated 2026 revenue, implies 4%.

[Xanadu](#) at \$3.87 billion implies 2%, [Infleqtion](#) at \$3.18 billion implies 2%, and [Quantum Computing](#) at \$2.25 billion implies 1%.

Bernstein rates IBM “market-perform” with a price target of \$280, describing it as the primary driver of the hybrid quantum-classical paradigm through its Quantum-Centric Supercomputing architecture.

[Infineon](#) is rated “outperform” with a price target of €74, given its role as the leading foundry supplying trapped-ion quantum processing units to IonQ and other players.

Weekly Performance:

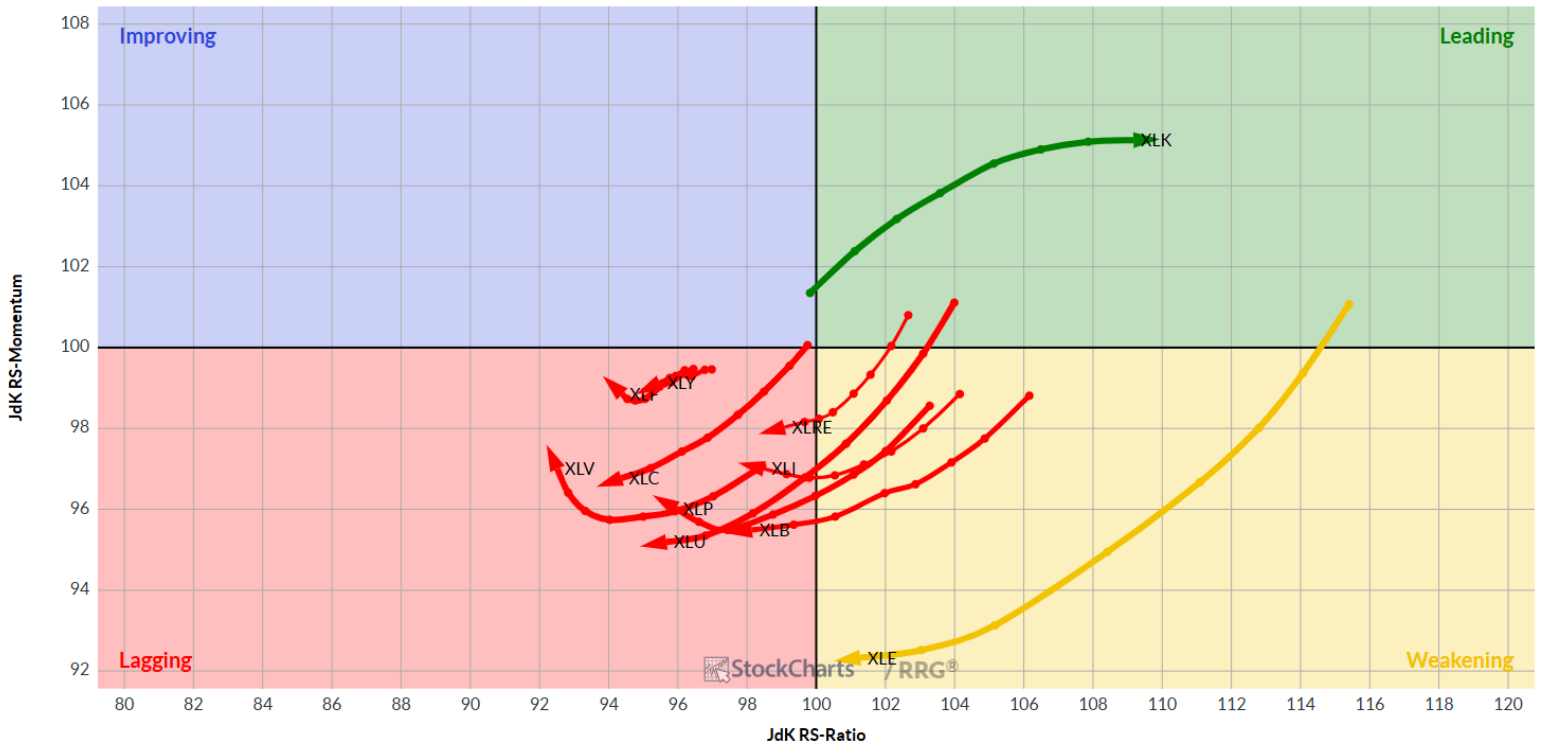


TIMEFRAME

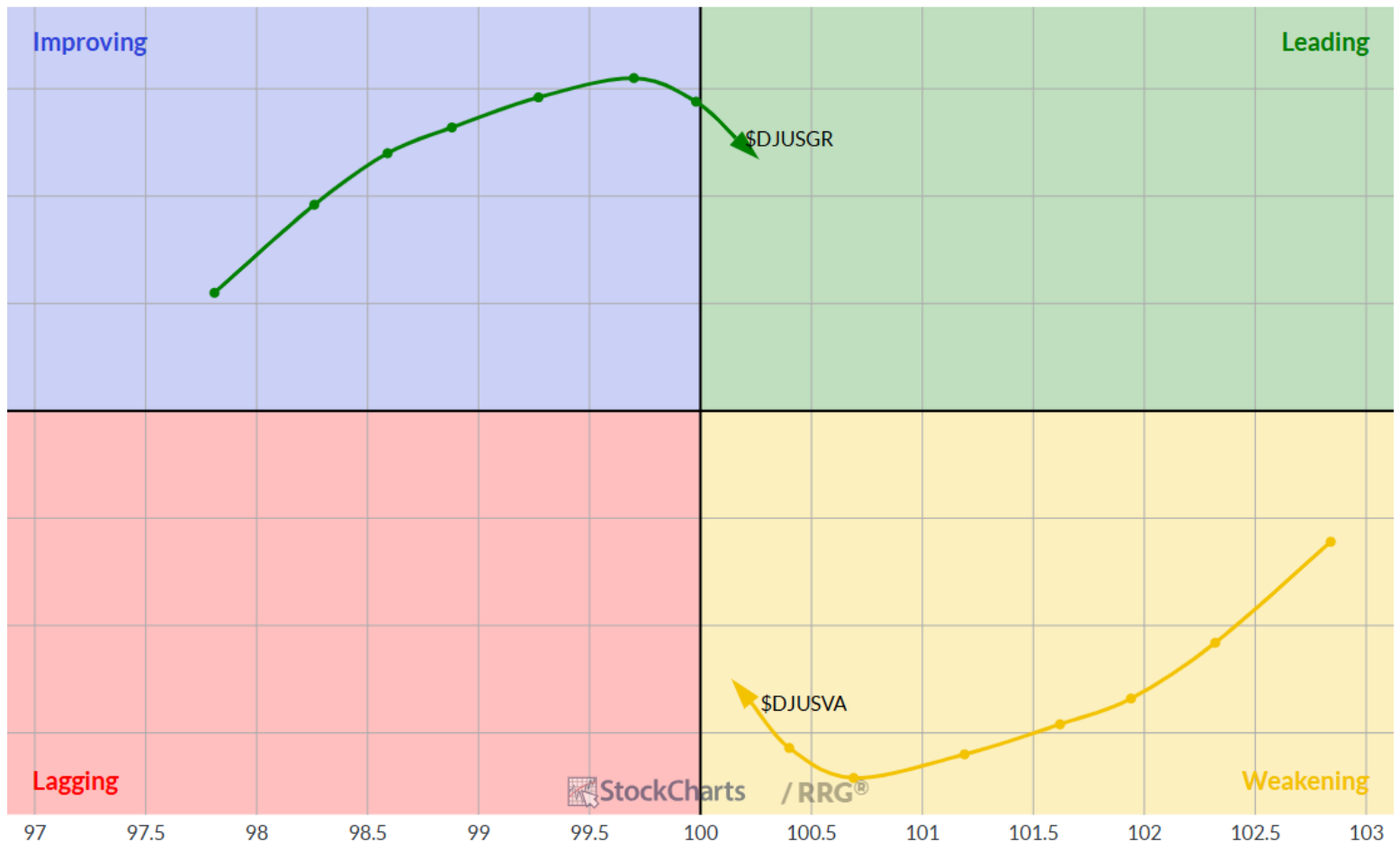
One Week Send Daily Report Send Weekly Report

NAME	LAST	% CHG	+/-	DATE
XLK - Technology Select Sector SPDR Fund	191.44	+4.49%	█	06-18, 16:00
XLI - Industrial Select Sector SPDR Fund	180.91	+3.29%	█	06-18, 16:00
\$NDX - Nasdaq 100 Index	30,406.19	+3.26%	█	06-18, 16:32
IWM - iShares Russell 2000 ETF	295.59	+2.03%	█	06-18, 16:00
XLF - Financial Select Sector SPDR Fund	53.57	+1.81%	█	06-18, 16:00
XLU - Utilities Select Sector SPDR Fund	44.76	+1.61%	█	06-18, 16:00
\$SPX - S&P 500 Large Cap Index	7,500.58	+1.44%	█	06-18, 16:20
XLB - Materials Select Sector SPDR Fund	51.81	+1.15%	█	06-18, 16:00
XLY - Consumer Discretionary Select Sector SPDR Fund	117.16	+0.74%	█	06-18, 16:00
GLD - SPDR Gold Shares	387.12	+0.21%		06-18, 16:00
\$BTCUSD - Bitcoin to US Dollar	63,063.50	-0.79%	█	06-18, 20:32
XLP - Consumer Staples Select Sector SPDR Fund	83.30	-2.31%	█	06-18, 16:00
XLRE - Real Estate Select Sector SPDR Fund	43.86	-2.36%	█	06-18, 16:00
XLC - Communication Services Select Sector SPDR Fund	109.45	-2.38%	█	06-18, 16:00
XLV - Health Care Select Sector SPDR Fund	149.40	-3.04%	█	06-18, 16:00
XLE - Energy Select Sector SPDR Fund	53.77	-5.86%	█	06-18, 16:00

Technology the only one leading (again)!



But Growth and Value may be starting to swap:



Top Software Companies by Market Cap:

TIMEFRAME

One Week ▾

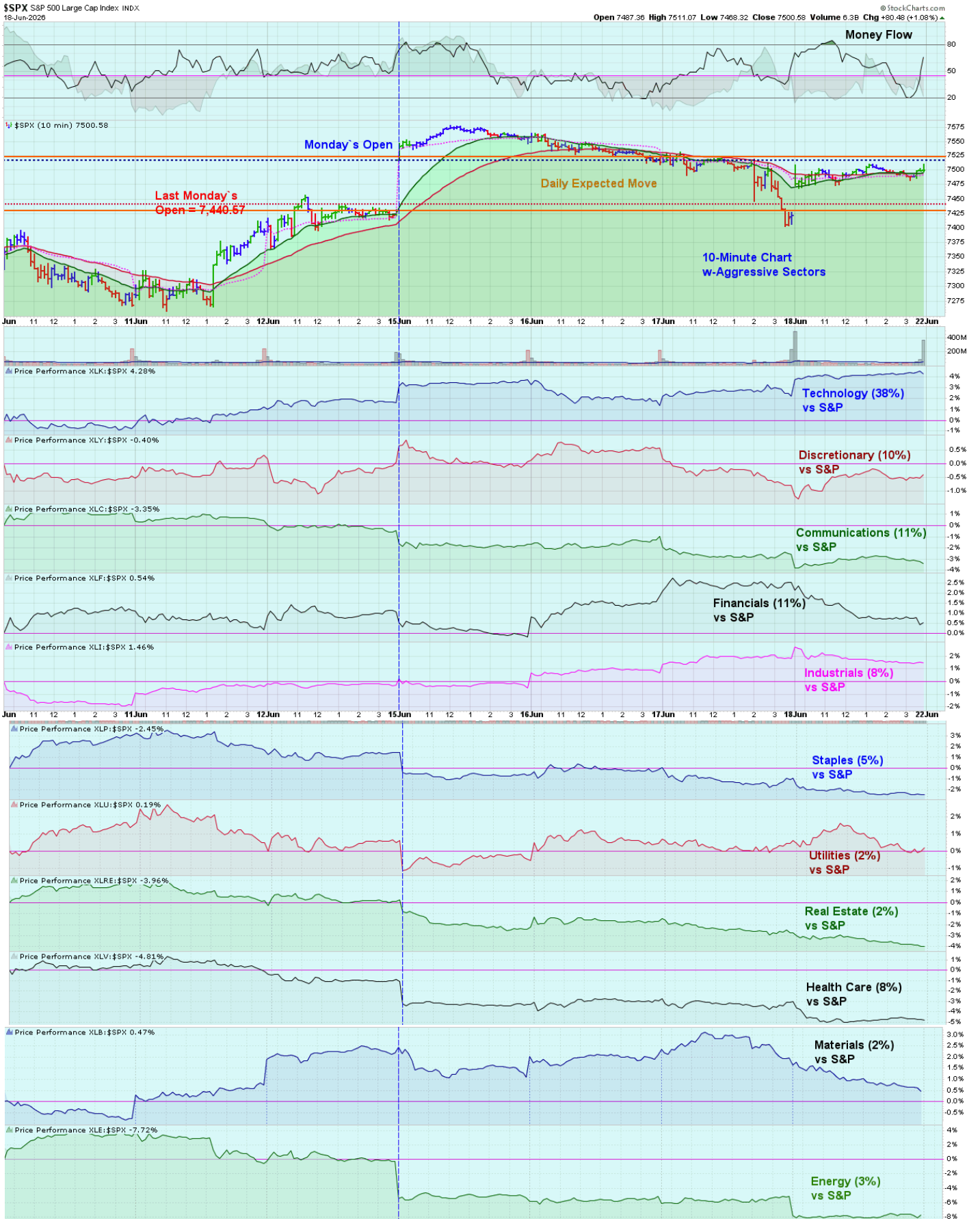
Columns

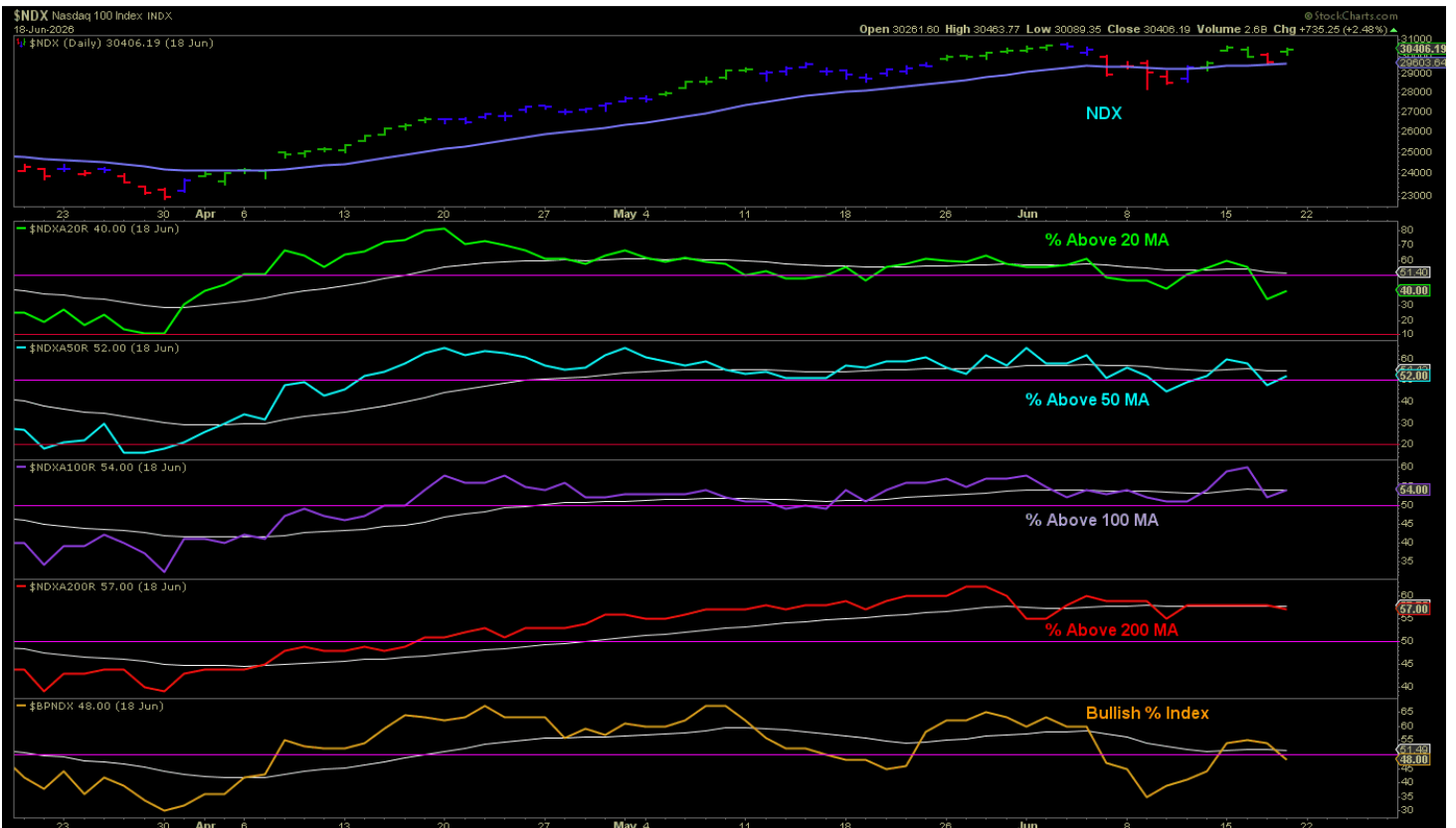
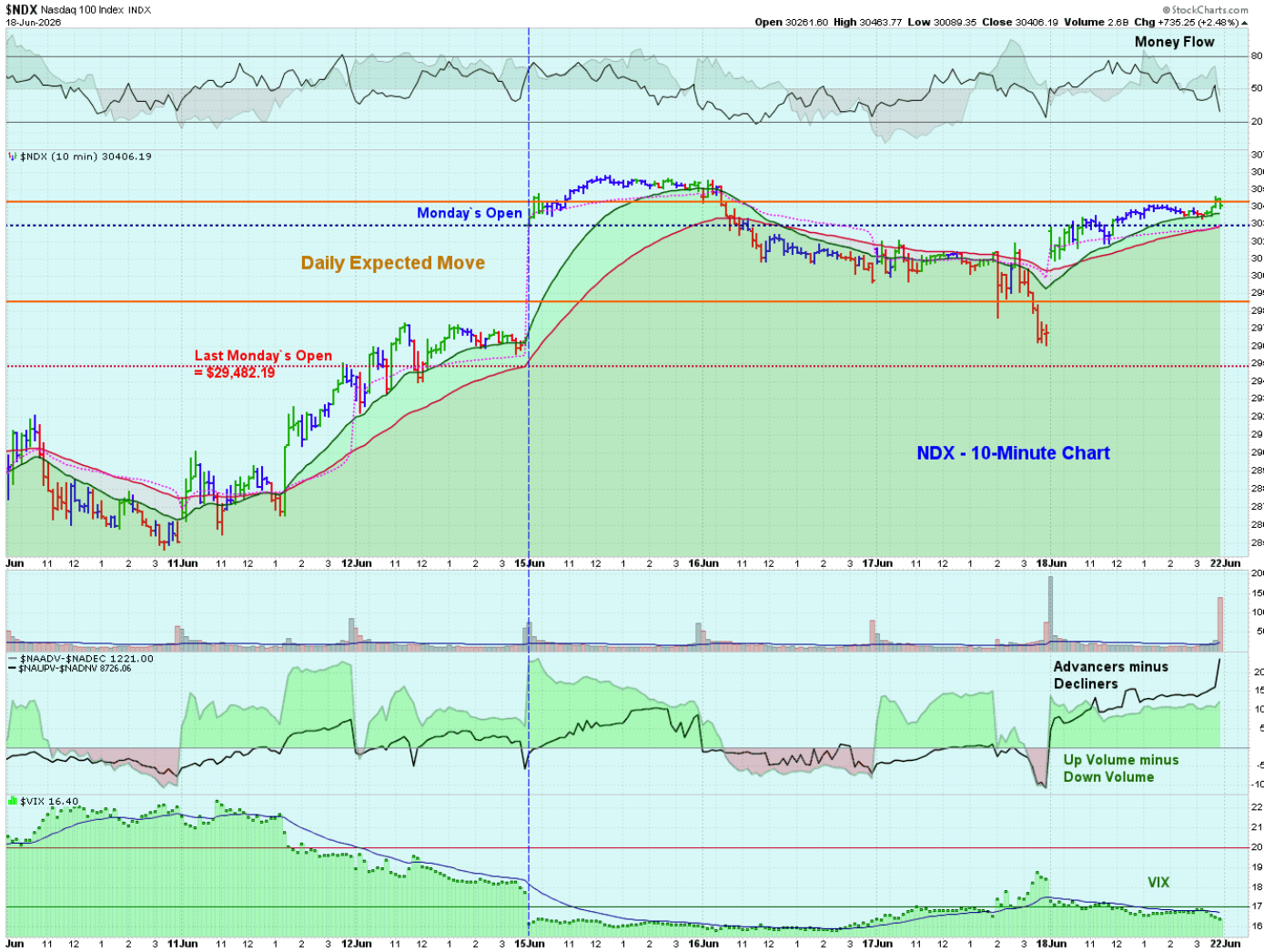
Hide stocks under \$1

🔍 Search Tab

🔗	NAME	LAST	CHG	% CHG	+/-	MARKET CAP	SCTR
☰	Microsoft Corp.	379.40	-10.94	-2.80%	■	2.818 T	9.7
☰	Oracle Corp.	184.29	+0.19	+0.10%		530.027 B	33.0
☰	Palantir Technologies, Inc.	128.47	-2.61	-1.99%	■	307.983 B	8.4
☰	SAP SE	155.22	-8.42	-5.15%	■	179.627 B	3.9
☰	CrowdStrike Holdings, Inc.	684.86	-6.67	-0.96%		174.341 B	88.6
☰	Applovin Corp.	469.71	-8.86	-1.85%	■	157.794 B	11.5
☰	Shopify, Inc.	108.85	-1.62	-1.47%	■	141.612 B	8.5
☰	Salesforce.com, Inc.	151.78	-14.67	-8.81%	■	124.308 B	2.4
☰	Cadence Design Systems, Inc.	387.39	+3.65	+0.95%		106.848 B	76.7
☰	Fortinet Inc.	144.73	-0.33	-0.23%		106.036 B	93.2
☰	ServiceNow, Inc.	95.04	-8.04	-7.80%	■	98.016 B	3.7
☰	Synopsys, Inc.	455.51	-0.78	-0.17%		87.221 B	28.7
☰	Snowflake Inc.	232.29	-8.10	-3.37%	■	80.512 B	78.7
☰	Datadog Inc.	223.00	-11.24	-4.80%	■	79.379 B	90.4
☰	Cloudflare Inc.	224.06	-3.38	-1.49%	■	79.198 B	65.4
☰	Accenture Ltd.	127.98	-39.54	-23.60%	■	78.572 B	0.1
☰	Adobe Systems, Inc.	195.16	-23.64	-10.80%	■	77.576 B	0.9
☰	Intuit, Inc.	267.00	-9.91	-3.58%	■	73.034 B	0.0
☰	CoreWeave Inc.	117.95	+22.21	+23.20%	■	64.350 B	90.8
☰	Autodesk, Inc.	193.82	-11.75	-5.72%	■	40.924 B	3.3
☰	Strategy Inc	112.53	-7.62	-6.34%	■	39.566 B	1.2
☰	Microstrategy Inc.	60.53	-5.71	-8.62%	■	39.566 B	

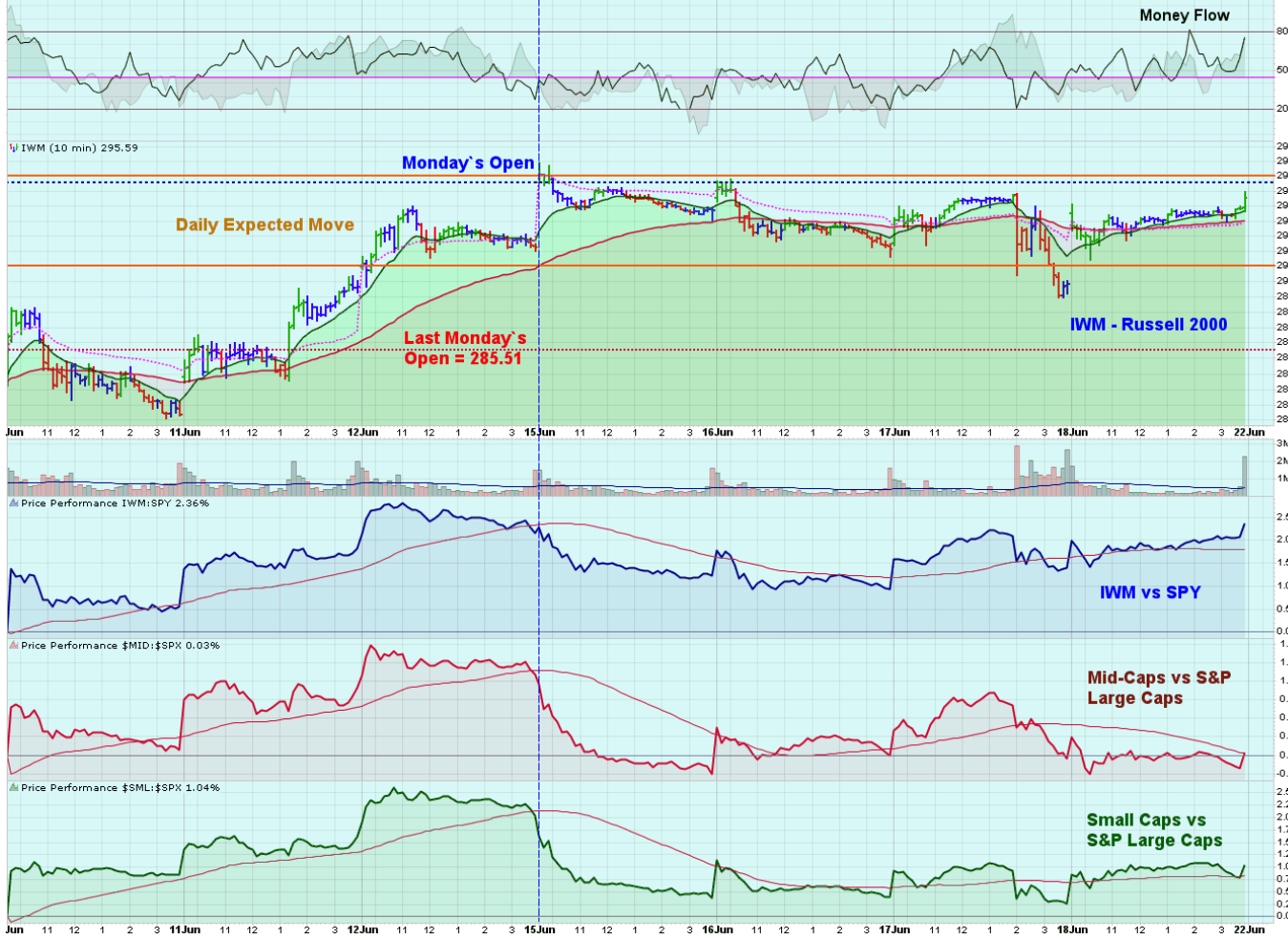
10-Minute Charts:





IWM iShares Russell 2000 ETF NYSE
18-Jun-2026

Open 294.55 High 295.97 Low 291.42 Close 295.59 Volume 32.4M Chg +5.71 (+1.97%)



\$SPX S&P 500 Large Cap Index: INDX
18-Jun-2026

Open 7487.36 High 7511.07 Low 7468.32 Close 7500.58 Volume 6.3B Chg +80.48 (+1.08%)



Top 10 Best & Worst Large Caps for the Week:

NAME	SECTOR	INDUSTRY	LAST	CHG	% CHG	+/-	SCTR
WDC - Western Digital Corp.	Technology	Computer Hardware	746.23	+216.94	+40.99%	▲	99.5
MRNA - Moderna Inc.	Health Care	Pharmaceuticals	63.96	+14.32	+28.85%	▲	95.2
ARM - Arm Holdings Plc	Technology	Semiconductors	439.46	+97.23	+28.41%	▲	99.4
STX - Seagate Technology Holdings, Inc.	Technology	Computer Hardware	1,070.23	+202.14	+23.29%	▲	99.2
TER - Teradyne, Inc.	Technology	Semiconductors	437.92	+56.52	+14.82%	▲	96.2
INTC - Intel Corp.	Technology	Semiconductors	133.99	+17.03	+14.56%	▲	98.8
MU - Micron Technology, Inc.	Technology	Semiconductors	1,133.99	+138.12	+13.87%	▲	99.7
TTWO - Take-Two Interactive Software, Inc.	Comm. Services	Internet	239.28	+27.20	+12.83%	▲	53.8
DASH - DoorDash Inc.	Discretionary	Special Consumer Services	173.46	+18.87	+12.21%	▲	22.0
VST - Vistra Energy Corp.	Utilities	Conventional Electricity	163.75	+17.37	+11.87%	▲	54.4
NAME	SECTOR	INDUSTRY	LAST	CHG	% CHG	+/-	SCTR
ACN - Accenture Ltd.	Technology	Software	127.98	-39.54	-23.60%	▼	0.1
FOX - Fox Corporation	Comm. Services	Entertainment	46.95	-14.41	-23.48%	▼	5.3
EPAM - EPAM Systems, Inc.	Technology	Software	76.64	-16.12	-17.38%	▼	
CBOE - CBOE Global Markets Inc.	Financial	Investment Services	249.10	-46.80	-15.82%	▼	10.3
CTSH - Cognizant Technology Solutions Corp.	Technology	Computer Services	43.70	-7.48	-14.62%	▼	1.1
IT - Gartner Group, Inc.	Technology	Computer Services	127.49	-21.32	-14.33%	▼	0.5
SLB - Schlumberger Ltd.	Energy	Oil Equipment & Services	48.09	-7.91	-14.12%	▼	45.4
HAL - Halliburton Co.	Energy	Oil Equipment & Services	34.93	-4.83	-12.15%	▼	48.2
LDOS - Leidos Holdings, Inc.	Industrial	Defense	107.12	-14.53	-11.94%	▼	1.6
KR - Kroger Co.	Staples	Food Retailers	56.61	-7.51	-11.71%	▼	8.7

DAILY VIEW



DAILY VIEW



Top 10 Best & Worst Small/Mid-Caps for the Week:

NAME	SECTOR	INDUSTRY	LAST	CHG	% CHG	+/-	SCTR
SEZL - Sezzle Inc.	Financial	Financial Administration	163.28	+34.45	+26.74%	▲	98.2
TLN - Talen Energy Corp.	Utilities	Multiutilities	436.29	+91.49	+26.53%	▲	85.4
ENTG - Entegris, Inc.	Technology	Semiconductors	178.77	+33.85	+23.36%	▲	95.5
ALGM - Allegro Microsystems Inc.	Technology	Semiconductors	59.00	+11.04	+23.02%	▲	97.1
HIMS - Hims & Hers Health, Inc.	Health Care	Health Care Providers	35.47	+6.60	+22.86%	▲	80.6
ACMR - ACM Research, Inc.	Technology	Semiconductors	109.87	+18.17	+19.81%	▲	99.1
ESAB - ESAB Corporation	Industrial	Industrial Suppliers	106.20	+17.05	+19.13%	▲	46.7
AMKR - Amkor Technology, Inc.	Technology	Semiconductors	90.46	+14.31	+18.79%	▲	96.8
COHU - Cohu, Inc.	Technology	Semiconductors	69.40	+10.83	+18.49%	▲	98.9
MKSI - MKS Instruments, Inc.	Technology	Semiconductors	406.37	+61.05	+17.68%	▲	97.8
NAME	SECTOR	INDUSTRY	LAST	CHG	% CHG	+/-	SCTR
LRN - Stride Inc.	Discretionary	Special Consumer Services	82.80	-16.67	-16.76%	▼	35.6
ARCB - ArcBest Corp.	Industrial	Trucking	144.53	-28.14	-16.30%	▼	91.5
CENX - Century Aluminum Co.	Materials	Aluminum	51.71	-9.23	-15.15%	▼	75.9
SATS - EchoStar Holding Corp.	Technology	Telecom Equipment	109.17	-18.96	-14.80%	▼	31.9
BAH - Booz Allen Hamilton Holding Corp.	Industrial	Business Support Services	66.36	-10.84	-14.04%	▼	6.0
AA - Alcoa Corp.	Materials	Aluminum	59.37	-9.61	-13.93%	▼	55.6
MORN - Morningstar Inc.	Comm. Services	Publishing	153.68	-23.47	-13.25%	▼	4.8
SM - SM Energy Co.	Energy	Exploration & Production	27.14	-4.14	-13.24%	▼	58.9
TDW - Tidewater, Inc.	Energy	Oil Equipment & Services	64.67	-9.55	-12.87%	▼	28.7
PTEN - Patterson-UTI Energy, Inc.	Energy	Oil Equipment & Services	10.04	-1.45	-12.62%	▼	80.0

DAILY VIEW



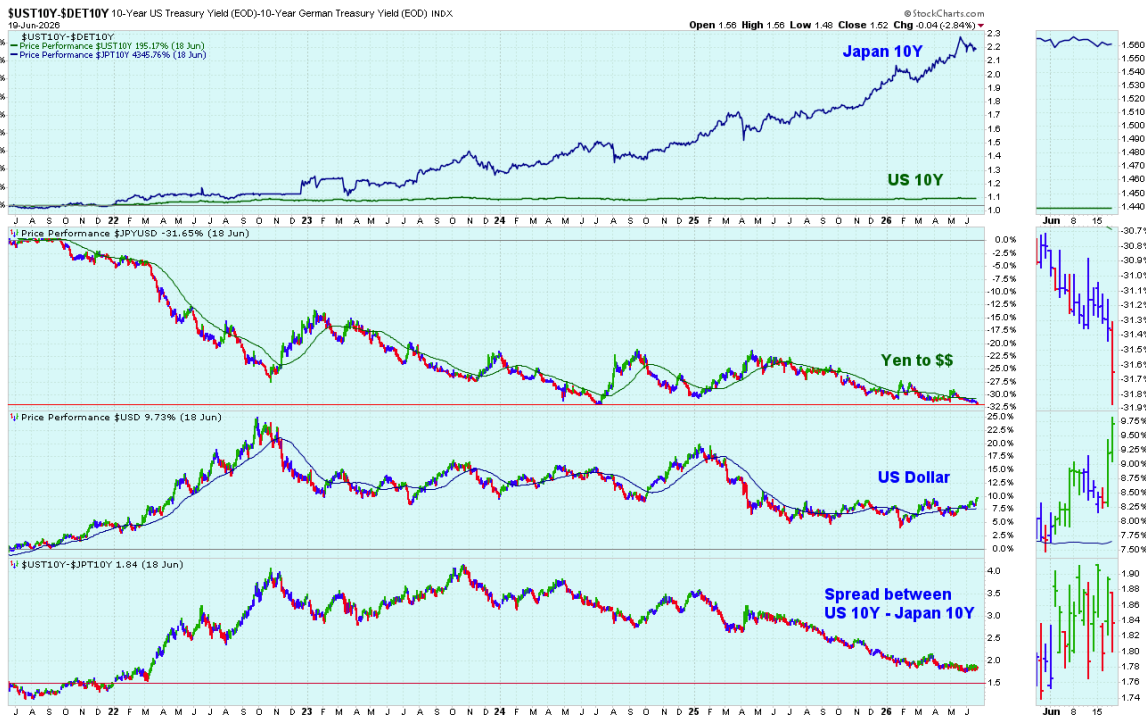
DAILY VIEW



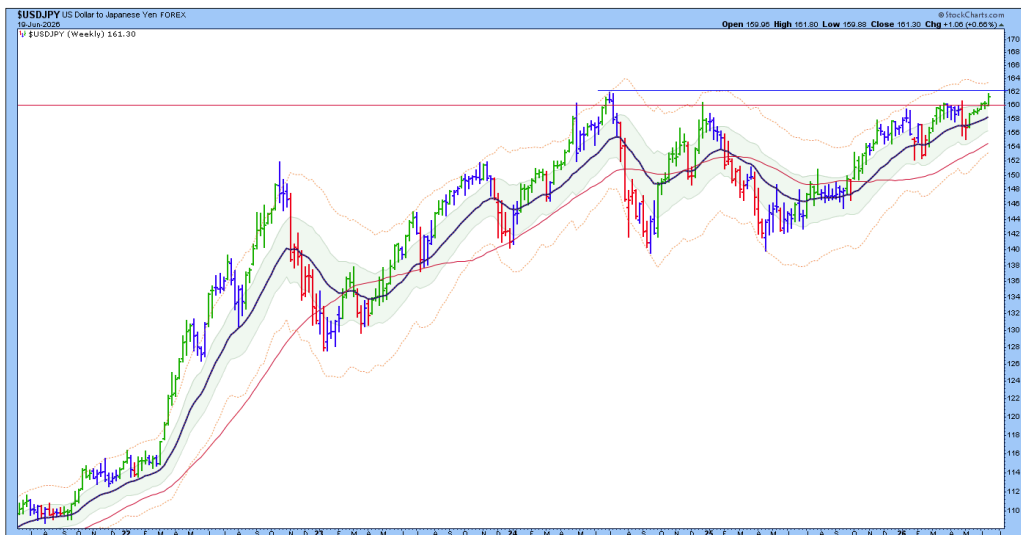
US Dollar vs Japanese Yen. Something important to watch is the Yen Carry Trade. If the Yen gets too cheap vs the US Dollar, and especially if the spread between the US 10-Year and the Japanese 10-Year gets too low, it may cause significant disruptions in global markets, with liquidity exiting the US and repatriating back to Japan.

This chart shows the 5-Year relative performance of the Japanese 10-Year vs US 10-Year (top panel). The next panel shows the Yen at its lowest point in 5 years vs US Dollar, as the Dollar strengthens (3rd panel).

Finally, the last panel shows the spread between the US 10-Year and the Japan 10-Year. This is the one to watch.



The USDJPY Currency is now above the critical 160 level (Red line). The peak in 2024 was at 162. On Friday it hit 161.8



From Real Investment Advice

[Kevin Warsh And The End Of The Fed's "Forward Guidance" - RIA](#)

Excerpt:

Market Brief – Kevin Warsh Jolts A Resilient Tape

For a week that delivered a hawkish regime change at the Fed and the largest options expiration in history, the tape held up remarkably well. All four major indices finished green. The Nasdaq Composite led, up 2.43% to 26,517.93, with the Russell 2000 gaining 1.22% to 2,979.77, the S&P 500 adding 0.93% to 7,500.58, and the Dow rising 0.71% to 51,564.70. That is not what most desks would have drawn up after Wednesday.

The path mattered more than the destination. Stocks ripped on Monday after the US and Iran announced a deal to end hostilities, with the S&P jumping 1.65% and the Nasdaq surging by more than 3%. They handed much of it back on Wednesday when Kevin Warsh used his first meeting as Fed Chair to drop forward guidance and reveal a dot plot in which nine of eighteen officials now pencil in a rate hike this year. Then Thursday's record quadruple-witching expiration cleared, chips and cyclical firms, and the indices closed the holiday-shortened week higher. Markets were dark on Friday for Juneteenth.

The cross-asset board did the explaining. The dollar was the standout. A hawkish Warsh and a market now pricing a rate hike by October lifted the dollar index to roughly 100.7, its highest since May 2025. Gold fell about 3.5% on the week to near \$4,175 as the firmer dollar and higher real yields sapped the metal. Treasury yields jumped on Wednesday's dots, with the 2-year ending at 4.19% and the 10-year at 4.46% after easing slightly on Thursday. Crude held its ground near \$75.70, but energy equities lagged as the US-Iran memorandum drained the last of the geopolitical premium, and pump prices finally slipped below \$4 a gallon for the first time since March.

The standout under the surface was what didn't happen. The VIX actually fell on the week, easing from above 18 into the mid-16s. This happened despite the Fed turning hawkish, with only a brief pop to 17.2 on the decision. Energy was the clear sector laggard while technology, semiconductors, and small caps carried the load. A market that meets a hawkish regime change with falling volatility is a confident one. Notably, that confidence is precisely what gets repriced when the next surprise lands.

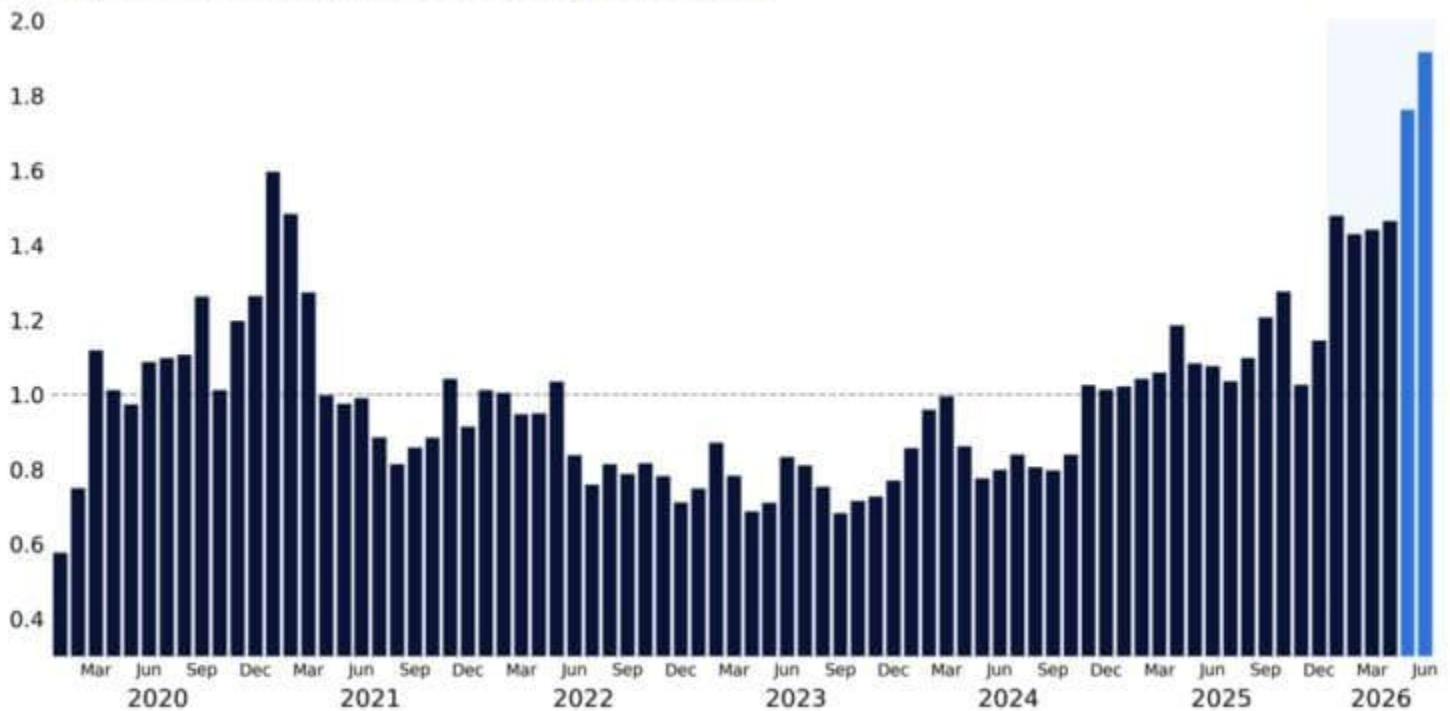
The thread to carry into next week is straightforward. With the Fed no longer telegraphing its hand, the incoming data sets the tone on its own. Thursday's PCE inflation print is the first real test of that new world.

The mechanics are the story for the next two weeks. As Citadel Securities' Scott Rubner notes, Thursday's roughly \$8.3 trillion quadruple-witching expiration, the largest in history, cleared a substantial block of gamma and leaves the tape more sensitive to flows into month- and quarter-end. Rubner's read past the reset is constructive. There is record retail demand, a buy-the-dip reflex that holds while the VIX sits in the mid-teens. Moreover, one of the strongest seasonal windows of the year approaches as July's allocation cycle begins.

“May shattered previous activity records in cash equities, surpassing the prior monthly high set in January 2021 by more than 10%. Retail cash equity volumes ran 60% above the 2025 average and more than twice the 2024 average. From this peak, activity has accelerated further in June, with volumes this month tracking 9% above May’s record. Nine of the ten largest retail trading days ever observed on our platform have occurred in just the last month, including seven during the first half of June alone. Friday (June 12) marked the largest single day of retail net buying in our dataset, surpassing the previous record by 50%.” – Citadel

Retail Cash – May and June Trading is Record Breaking

Monthly Gross Notional, Indexed to Average Since 2020



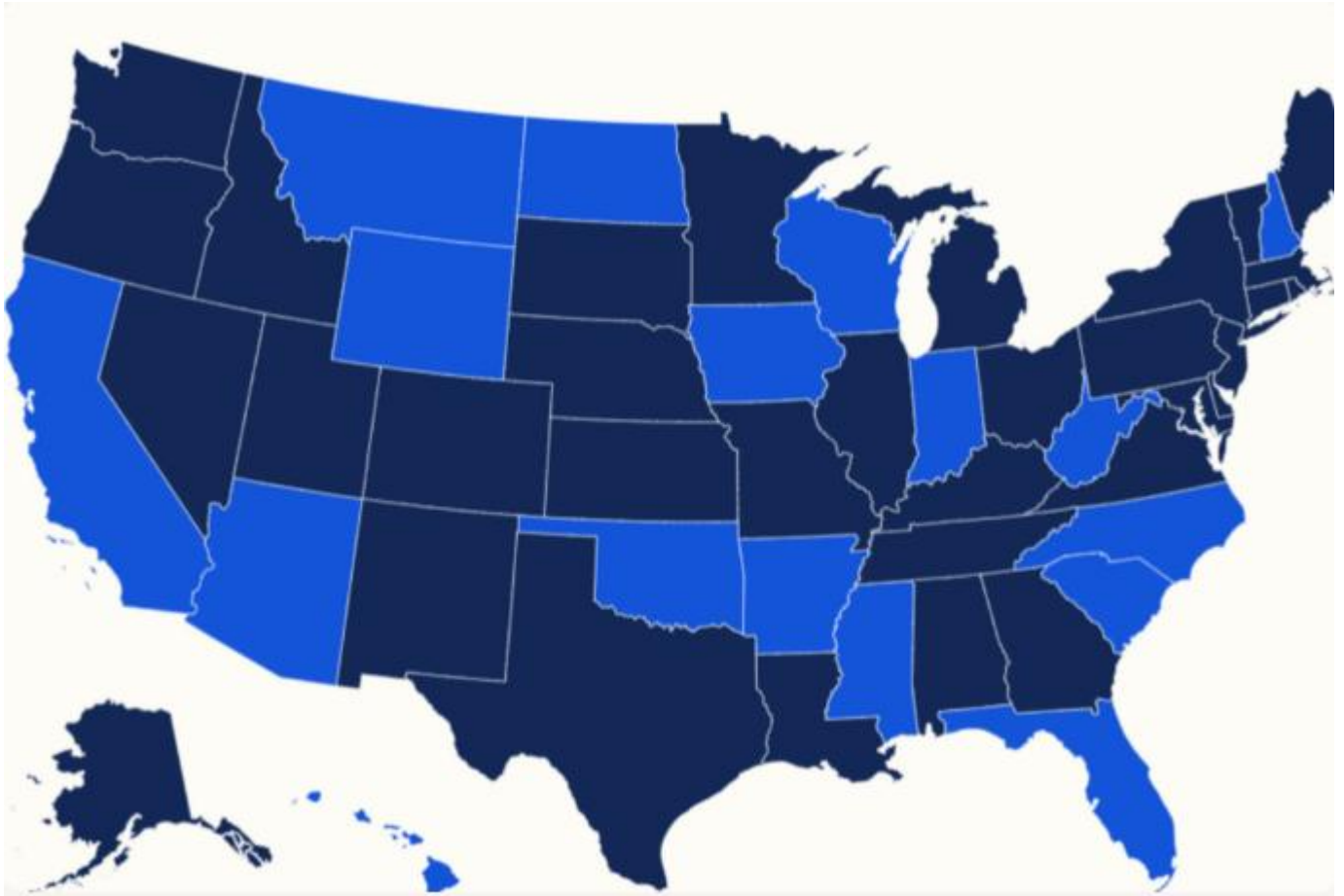
Source: Citadel Securities, GMI, as of June 15, 2026. Figures are for illustrative purposes only. Past performance figures do not guarantee future results.

We splice that flow tailwind against the main story below. The path of least resistance may well be higher. However, Warsh just pulled out the guidance cushion, and an OPEX-thinned tape reacts harder to surprises. Respect 7,329 and the 50-DMA as support. Investors should treat the 7,610 record as the level to clear. Remain attentive and let price, rather than the narrative, set your exposure.

Trade accordingly.

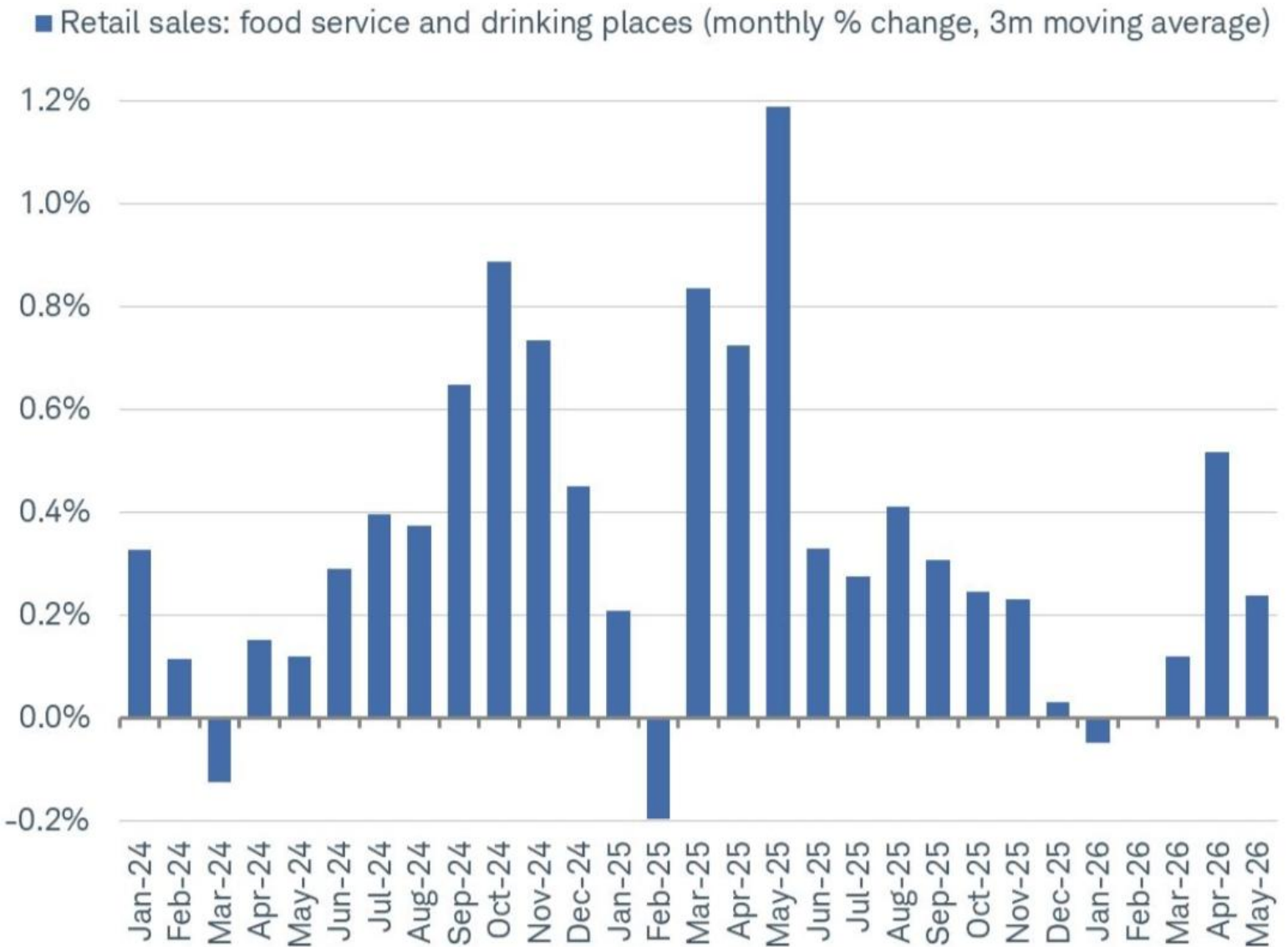
NOTE: I encourage you to read the full article

[Good luck trading...](#)



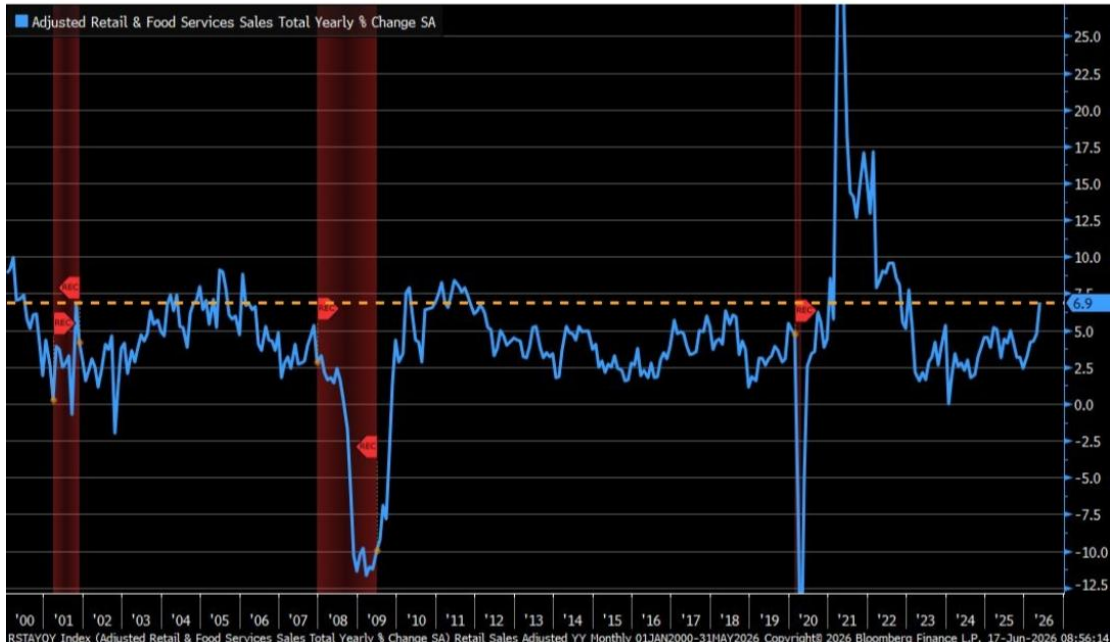
Newsweek map showing which states give state workers Juneteenth off as a paid holiday.

Retail sales growth for bars and restaurants eased in May but still positive...3-month average of monthly change +0.24%



Source: Charles Schwab, Bloomberg, as of 5/31/2026.

In year/year terms, nominal retail sales continued to accelerate, climbing +6.9% in May



Johnson Redbook retail sales posted another strong gain in week ended June 13, rising +9.4% vs. +9.0% prior...index has been running hot in the 8-9% range for the past six weeks



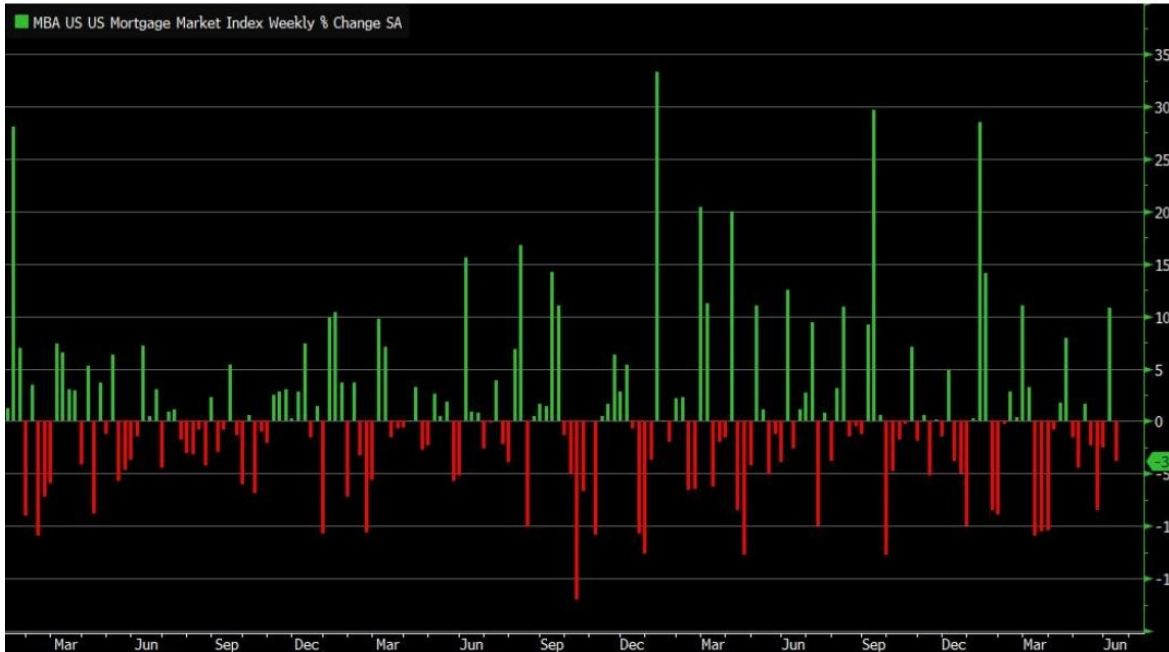
According to June SEP (summary of economic projections), number of FOMC participants reporting downside risks to GDP growth plunged to 5 vs. 14 in March



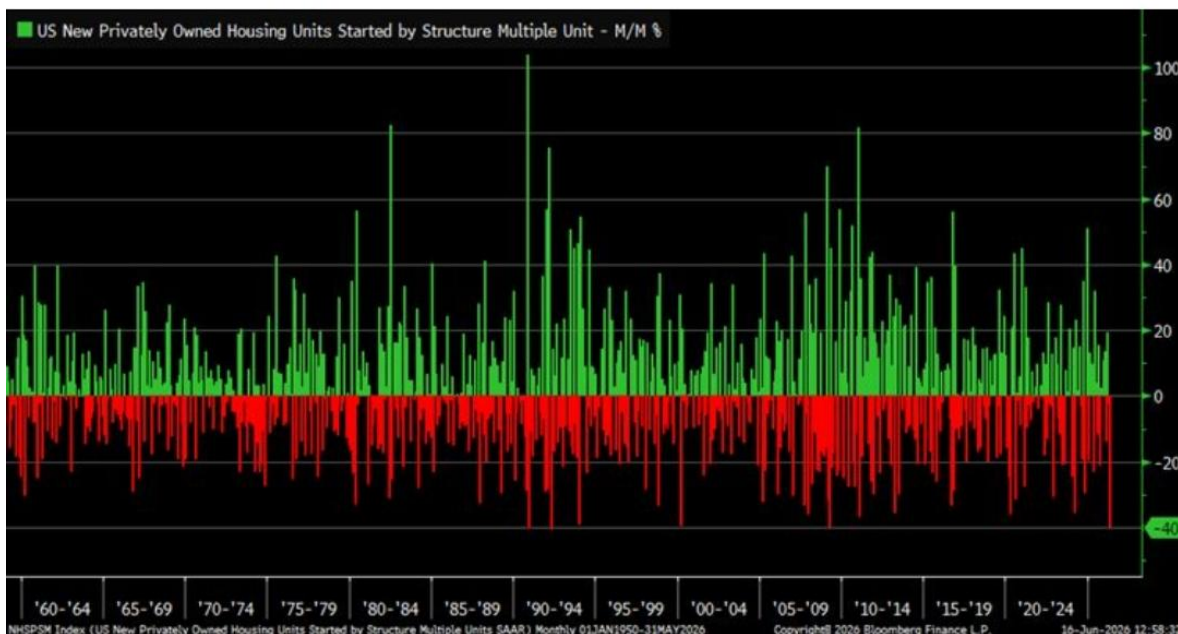
Adjusted for ISM methodology, Empire Manufacturing Index dropped five percentage points to 53 in June but is still expanding



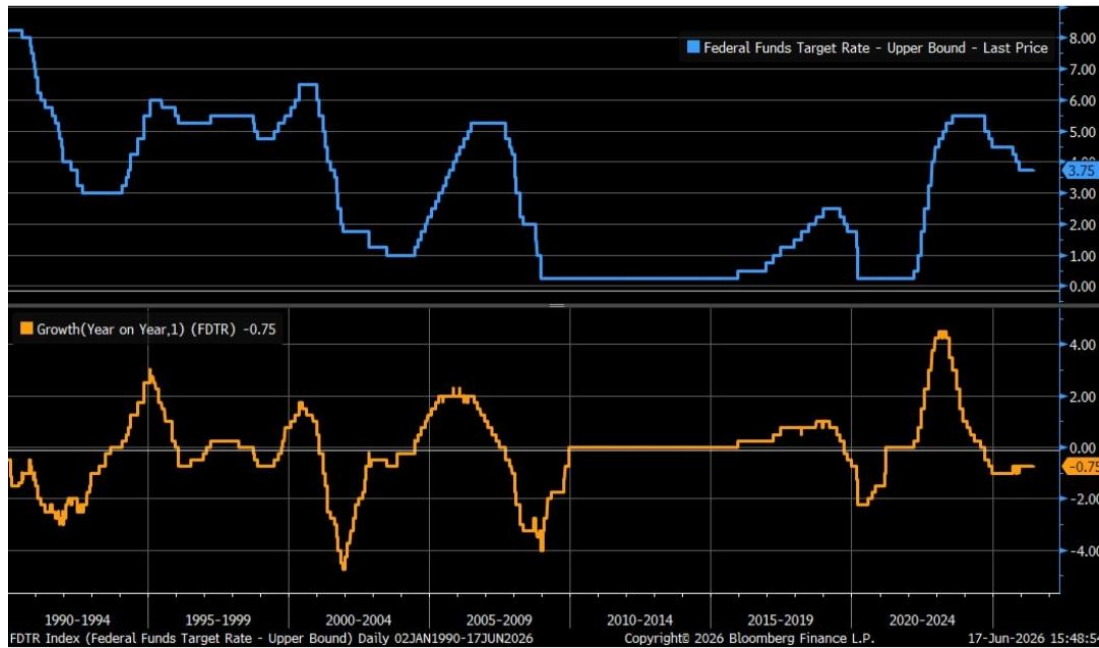
MBA mortgage applications for week ended June 12 fell -3.8% vs. +10.8% prior...30-year mortgage unchanged at 6.60% vs. 6.60% prior



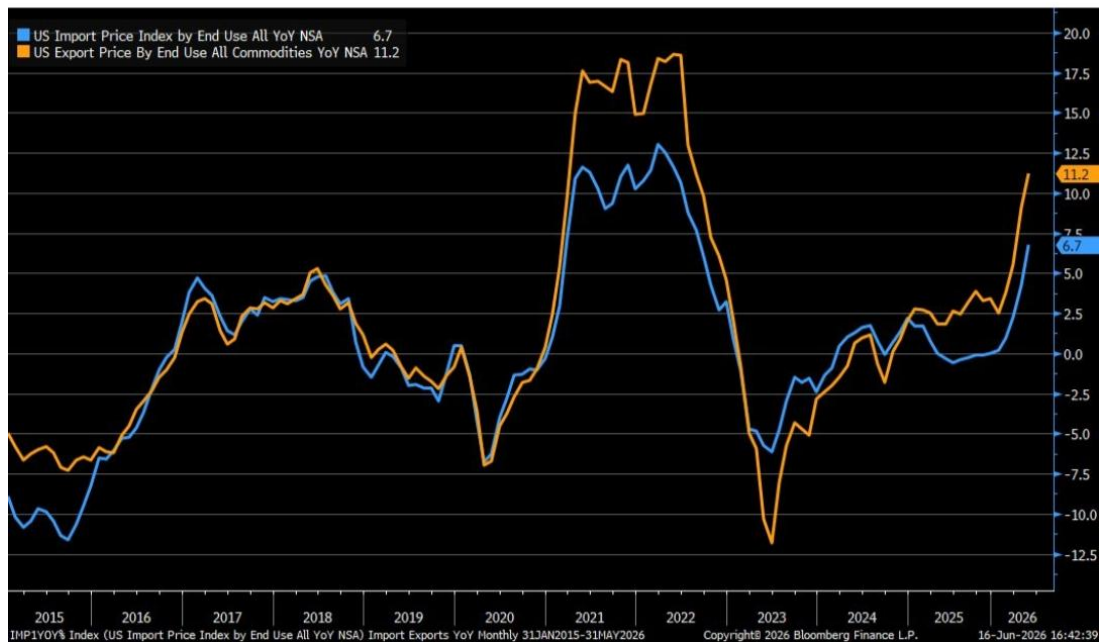
Epic decline in multifamily housing starts in May ... in full history of data, there are only two months with worse m/m drops



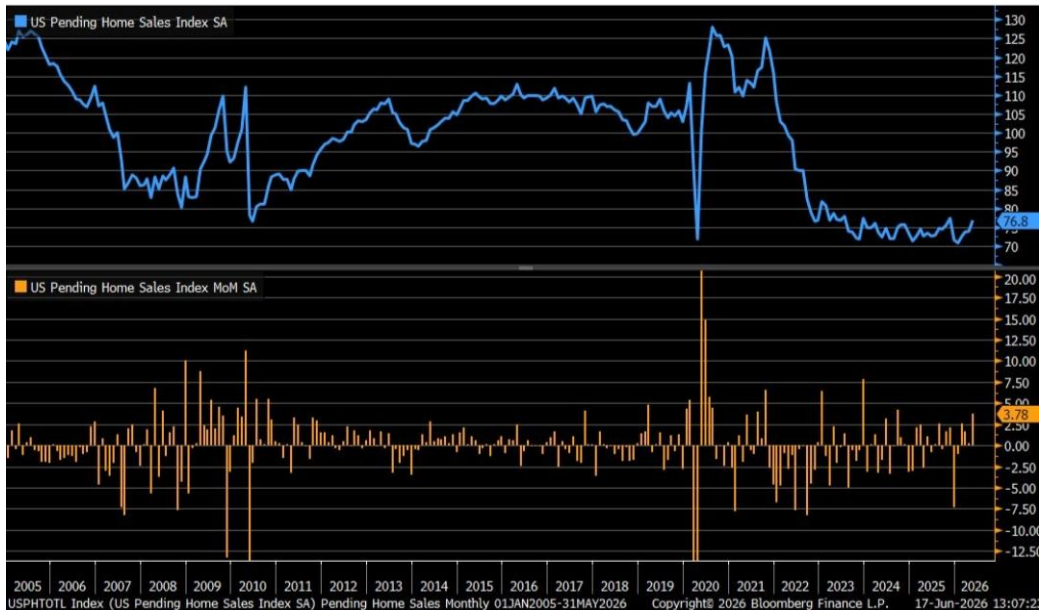
Fed rate remained unchanged in June, along with year/year growth which has been in negative territory for almost two years



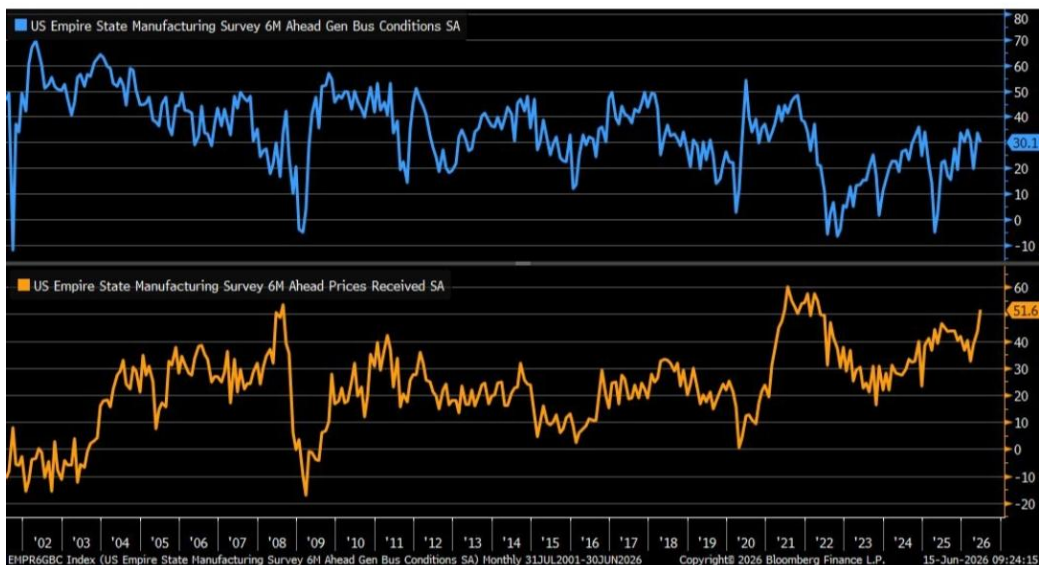
May import prices (blue) rose +6.7% vs. +4.2% prior, fastest pace in nearly four years... exports (orange) increased +11.2% vs. +9.1% prior



May pending homes increased +3.8% m/m vs. +0.3% prior...contract signings rose regionally led by Northeast +8.7%, followed by Midwest +8.1%, South +1.0% and West +0.1%



Firms still remain optimistic about the next six months according to **Federal Reserve Bank of New York Manufacturing Index but worth noting future selling price component is at its highest in over four years**



Business leaders in services sector surveyed by NY Fed remain downbeat about general business climate in next six months ... sentiment hasn't been net positive since January 2025



On a year/year basis, industrial production rose +1.67% in May and has remained in positive territory since 2025



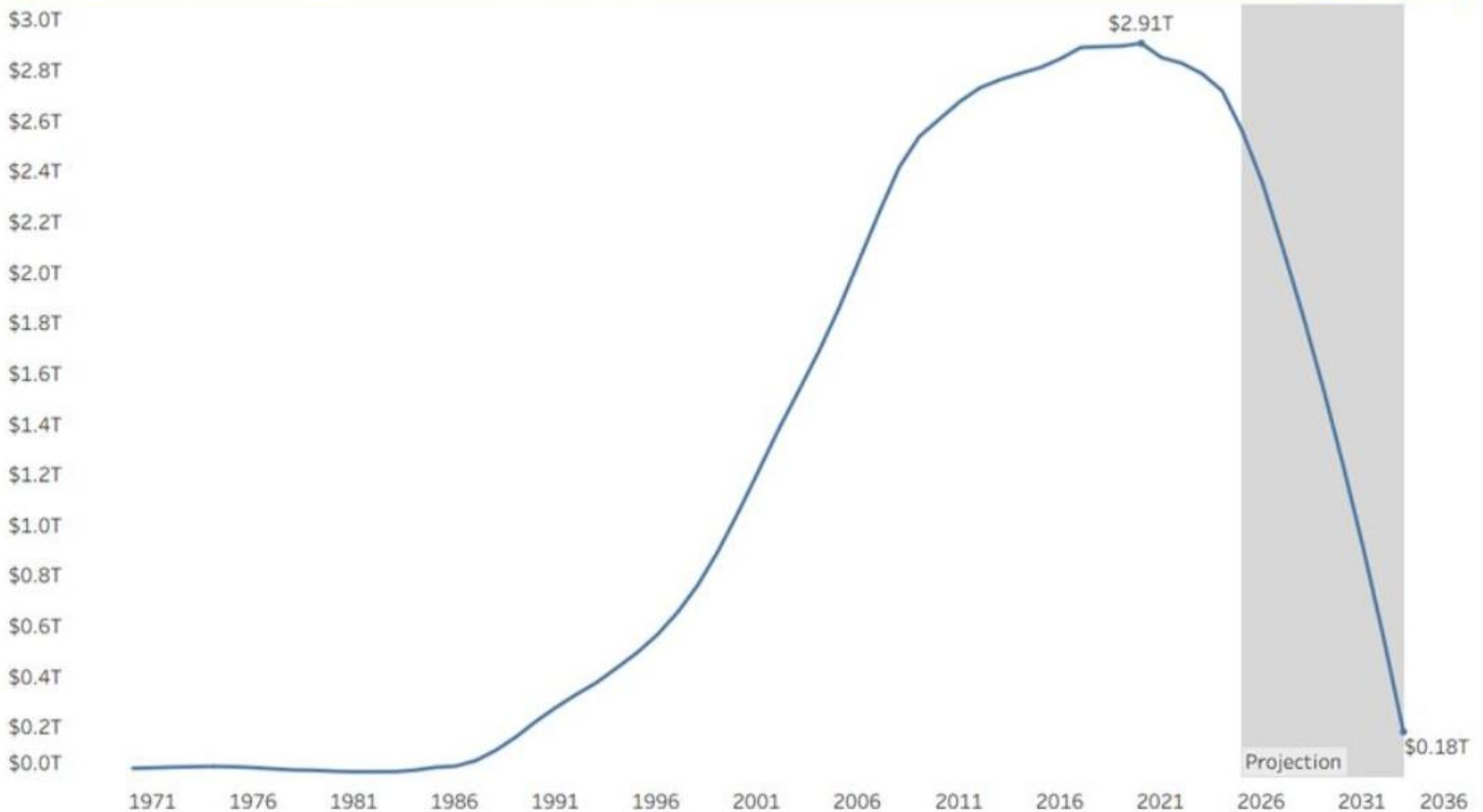
Despite a weaker headline in June, employment component of NY Fed Services Index continued to rise and is now at highest since July 2024



According to its latest annual report, Social Security can pay 100% of scheduled benefits through 4Q2032—one quarter earlier than projected last year...by 2033, with an estimated \$0.18 trillion in funds remaining, the program would be able to cover only 78% of benefits

A Rollercoaster Ride for the Total Holdings of the Social Security Funds

Past value and projected value of the two Social Security trust funds



Data Source: Social Security Administration

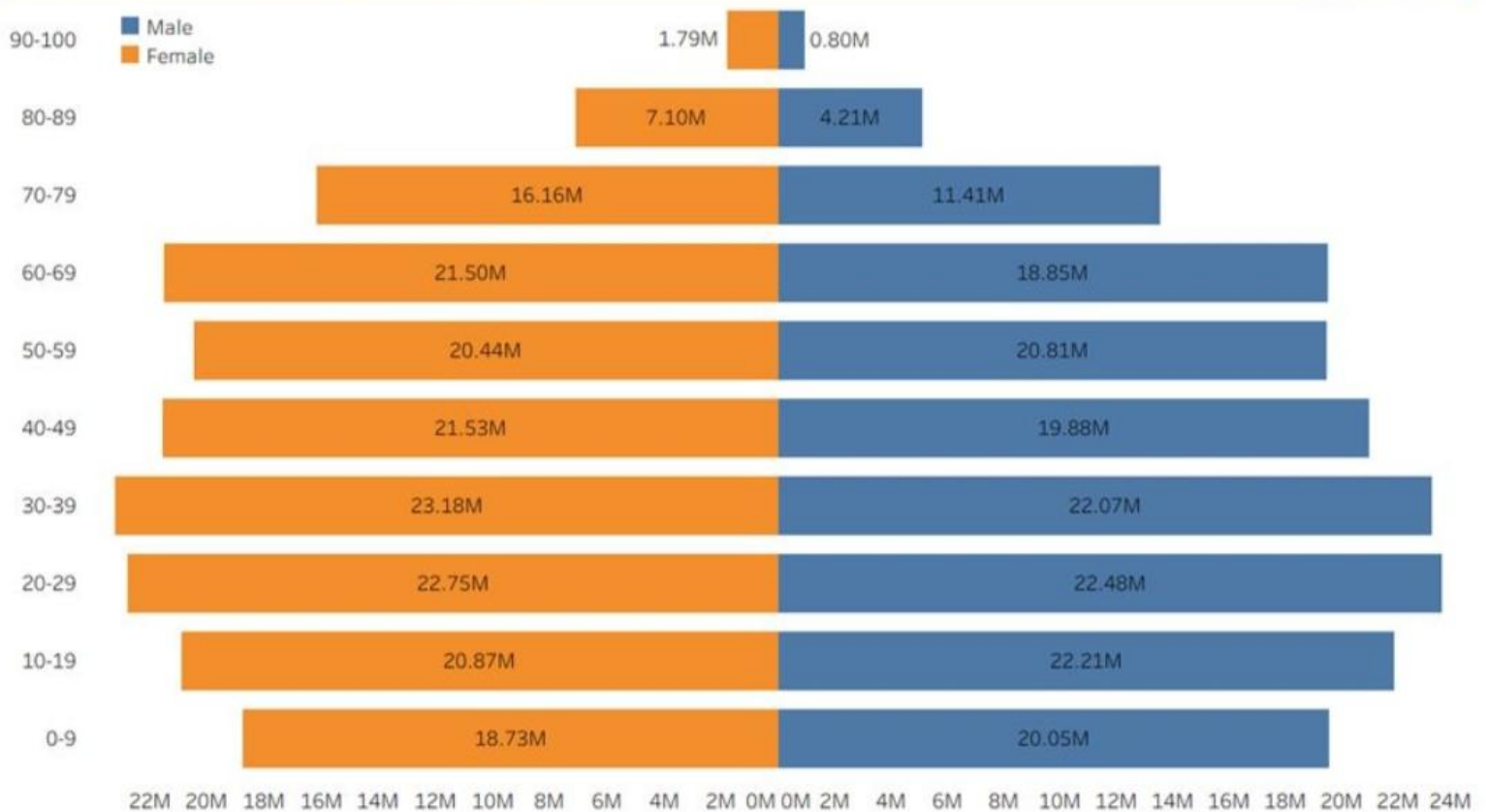
Note: Projections for 2026 onward come from intermediate scenario assumptions. Changes to

© 2026 Arbor Research & Trading, LLC. All Rights Reserved
data@arborresearch.com

According to **U.S. Census Bureau** population estimates, there were **39 million children** between the ages of 0-9 in 2025, lowest count for any age group under 70

The Narrowing in the Base of the U.S. Population Pyramid Will Be Felt Over Generations

Based on estimates of the U.S. population on July 1, 2025



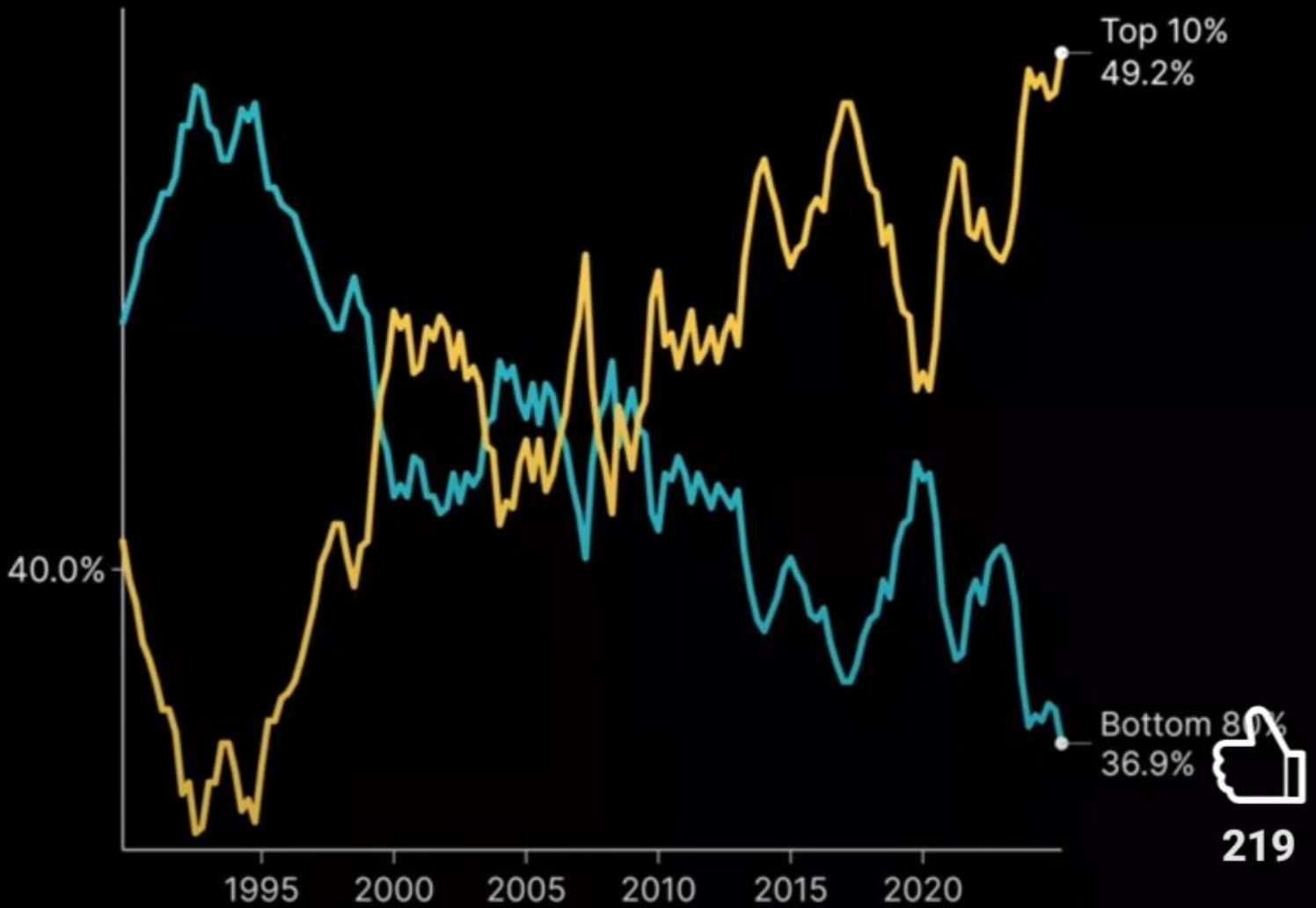
Data Source: U.S. Census Bureau

© 2026 Arbor Research & Trading, LLC. All Rights Reserved

The top 10% drive half of US spending

Share of total US consumer spending (%)

Apr 2025



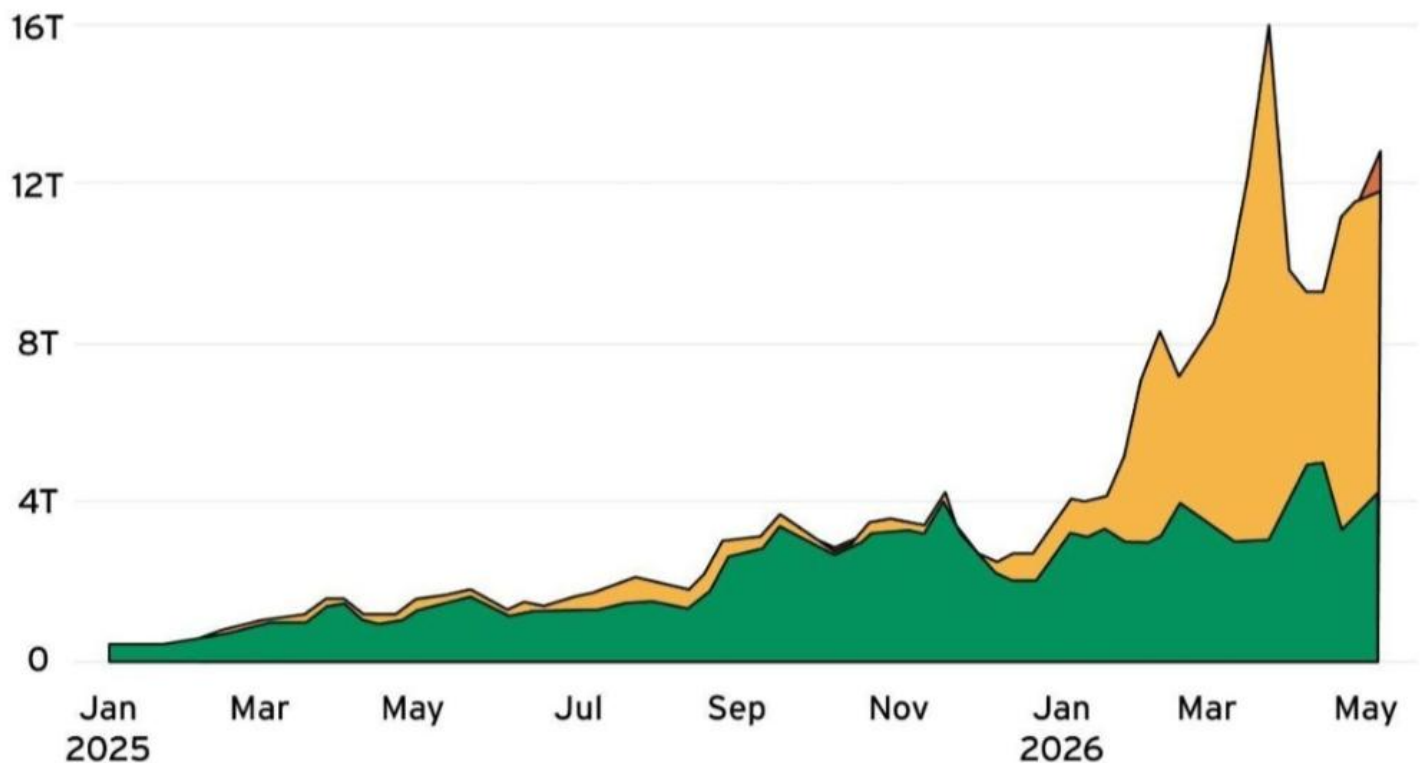
Built with Eeagli.com

Source: Moody's Analytics review of Federal Reserve data

—AI dumping from China ... more

Weekly Token Consumption of Top 9 Models Through OpenRouter API Calls

■ U.S. models ■ Chinese models ■ Other

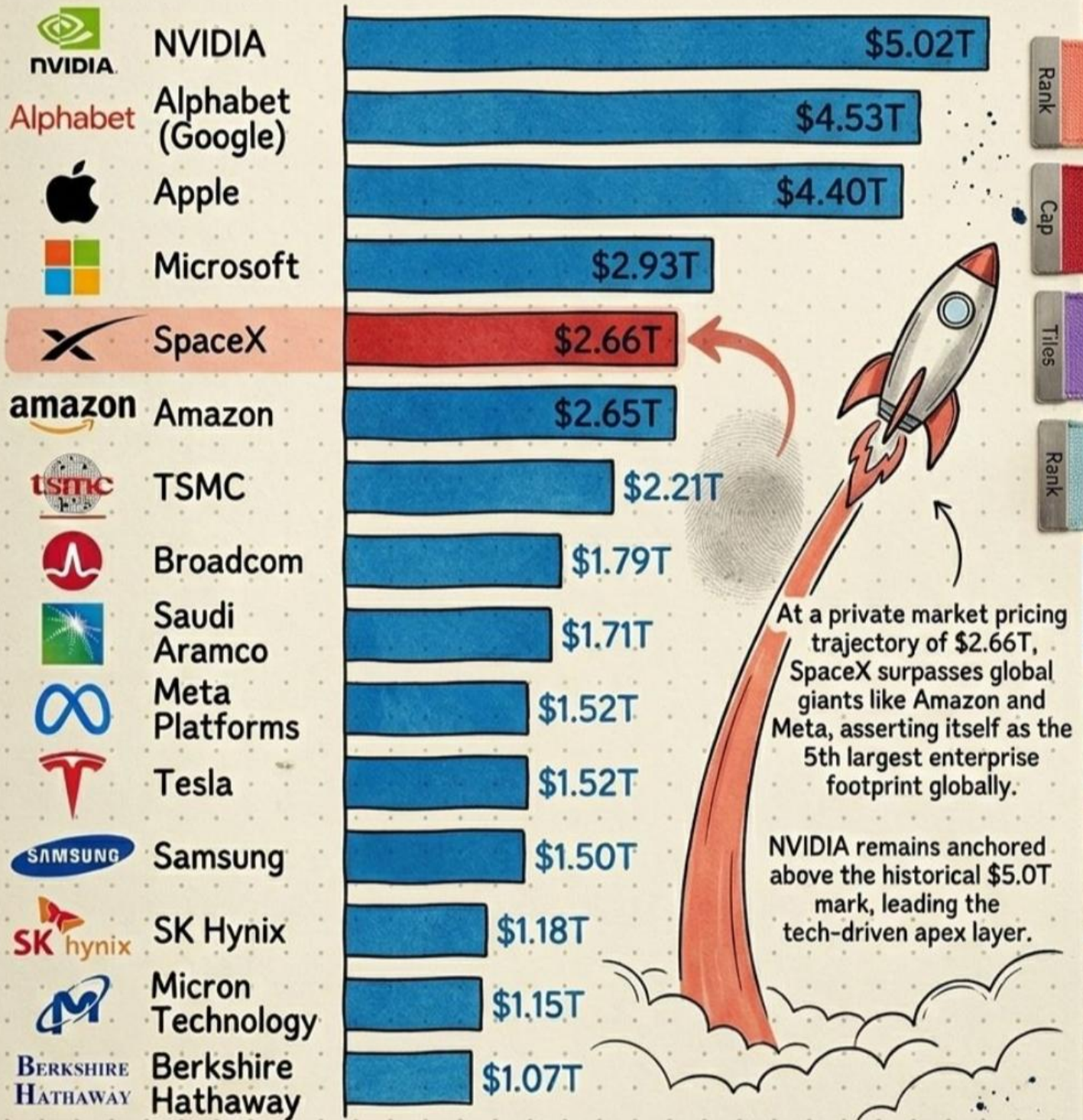


Source: OpenRouter LLM Ranking Leaderboard

Note: Token consumption refers to the amount of text an AI model reads and generates, and OpenRouter is a platform that lets developers connect different AI models into their apps.

SPACEX IPO vs. Largest Companies

June 16, 2026 Close



Data Source: Google Finance / Market Close June 16, 2026

THE LARGEST IPO'S IN HISTORY

BOARDROOM

1.	SPACEX		\$1.75T [*] 
2.	SAUDI ARAMCO		\$1.70T 
3.	ANTHROPIC		\$900B [*] 
4.	OPENAI		\$852B [*] 
5.	ALIBABA		\$231B 
6.	FACEBOOK		\$104B 
7.	NTT MOBILE		\$76B 
8.	SOFTBANK		\$64B 
9.	GM		\$62B 
10.	ENEL SPA		\$55B 

^{*}ANTICIPATED

How Rich is **Elon** **Musk?**

Elon Musk
\$1 Trillion



Jeff Bezos
\$262 B

**Mark
Zuckerberg**
\$202 B

**Jensen
Huang**
\$170 B

**Warren
Buffett**
\$145 B

**Gautam
Adani**
\$112 B

**Mukesh
Ambani**
\$83 B



Source: Reuters, Bloomberg Billionaires Index | Data as of June 12, 2026

This post is for general/educational information purpose and is no way to be considered as an advice, or recommendation for investment or otherwise.

SPACE VALUE CHAIN

SATELLITES



LAUNCH VEHICLES

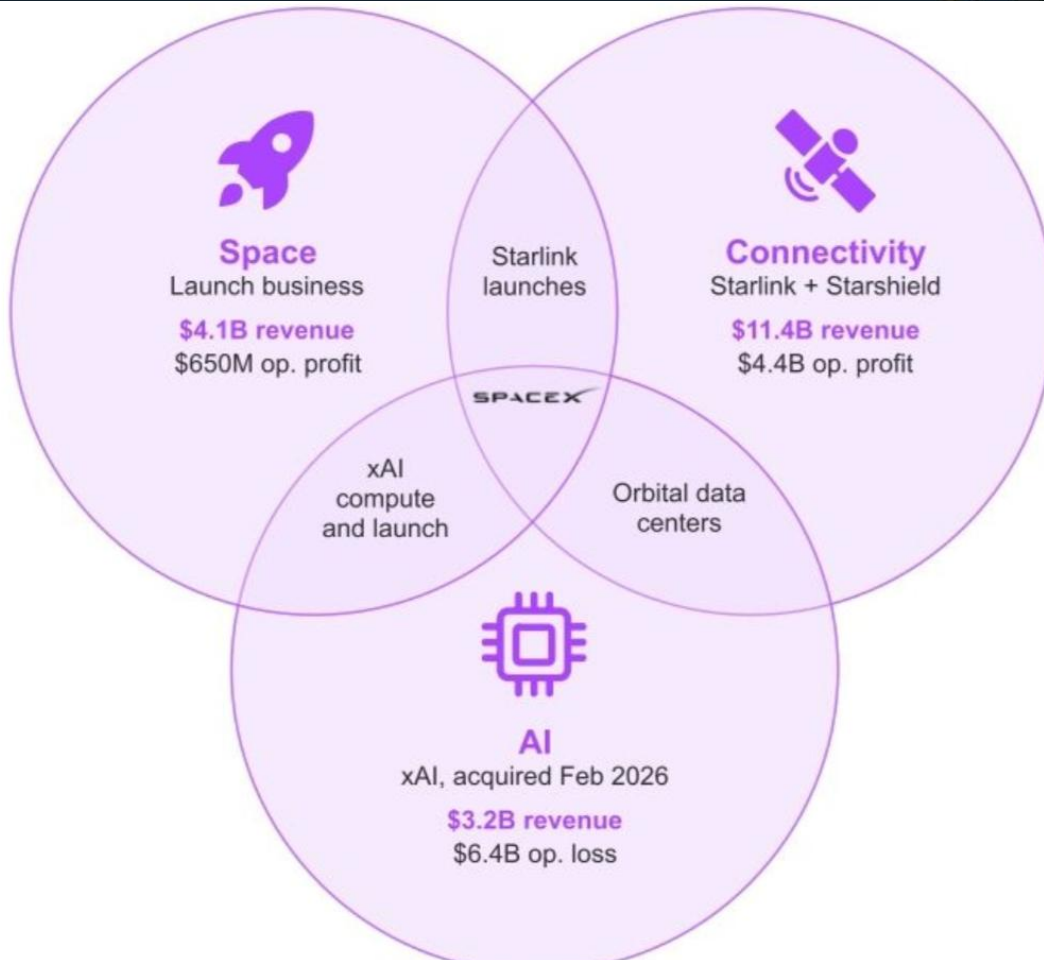


COMPONENT SUPPLIERS



SPEAR-INVEST.COM

SPEAR



LARGEST GOLD RESERVES COUNTRIES 2026

COUNTRIES GOLD HOLDINGS IN METRIC TONS



The World's CURRENCY RESERVES

How the world's central banks split \$13.1 trillion in foreign exchange reserves, as of Q4 2025.

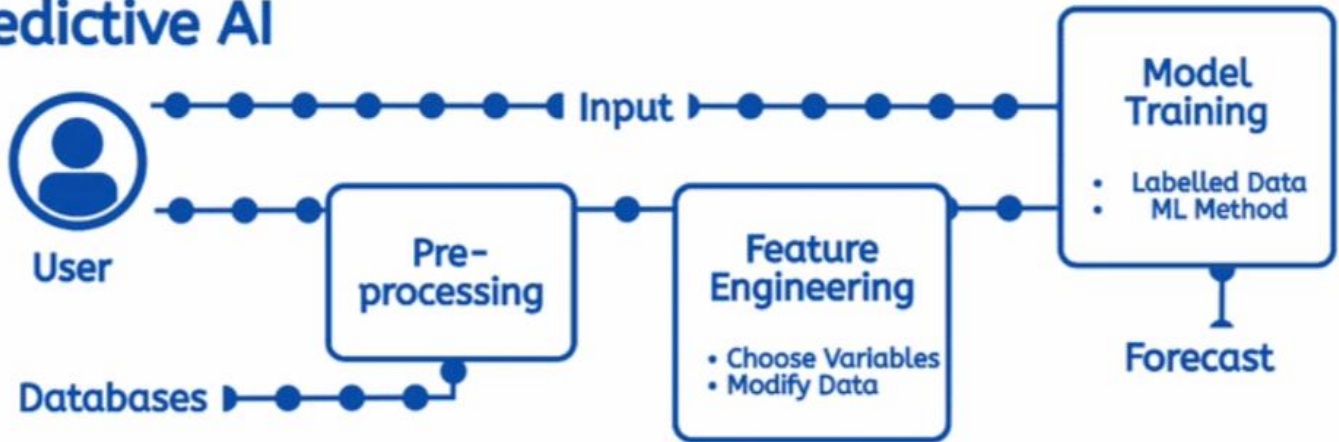


Source: IMF Currency Composition of Official Foreign Exchange Reserves (COFER)

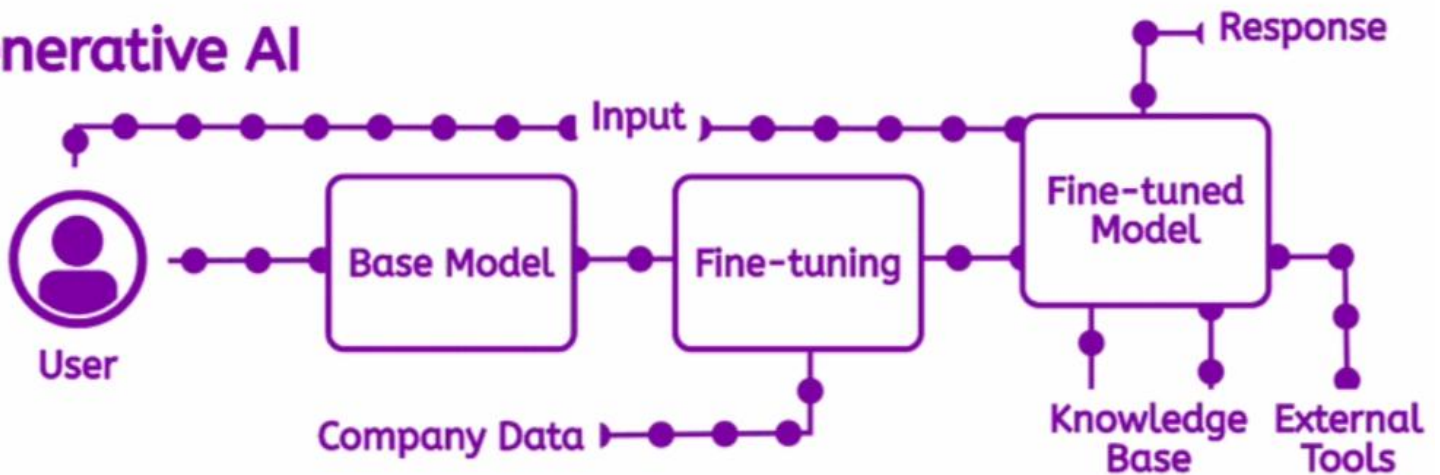
 **VISUAL CAPITALIST**

3 AI System Types

Predictive AI



Generative AI

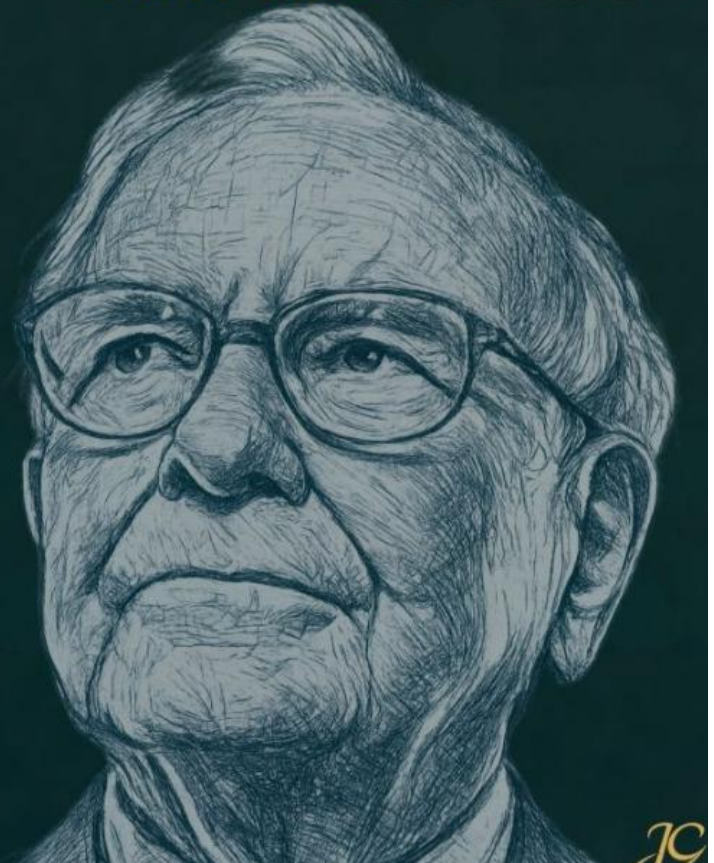


Agentic AI



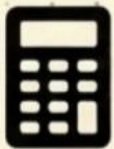
10 Things People Learn Too Late

1. EVERYTHING IS TEMPORARY
2. FAMILY MATTERS MORE THAN FRIENDS
3. THE BIGGEST RISK IS TAKING NO RISK
4. YOU PLAYED IT TOO SAFE
5. A LIFETIME ISN'T AS LONG AS YOU THINK
6. LIFE ISN'T FAIR
7. OTHERS TREAT YOU THE WAY YOU TREAT YOURSELF
8. HAPPINESS IS A CHOICE
9. BENEATH ANGER, THERE'S FEAR
10. THINGS DON'T MATTER SO MUCH



12 MONEY RULES

Financial formulas for a secure financial future.



Rule of 72

Years to double money = $72 /$ interest rate.

Takeaway: At 8% returns, wealth doubles every 9 years.



50/30/20 Rule

50% needs, 30% wants, 20% savings.

Takeaway: Simple budgeting that actually works.



4% Rule

Withdraw 4% annually in retirement.

Takeaway: Your money lasts 30 years.



Rule of 25x

Retirement savings = 25 times annual expenses.

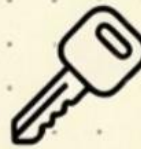
Takeaway: Not 25 times income. Focus on spending.



10% Rule

Max 10% of gross income for debt payment.

Takeaway: Above this, you're drowning.



20/4/10 Rule

20% down, 4-year loan, 10% payment.

Takeaway: Car buying limits that protect you.



6-Month Rule

Emergency fund = 6 months' expenses.

Takeaway: Not income, expenses. A true safety net.



1% Rule

Rental income must exceed 1% of property price.

Otherwise, you're losing money.



Rule of 110

Stock percentage = 110 minus your age.

Adjust allocation as you age to reduce risk.



3-Day Rule

Wait 3 days before big purchases.

Kills impulse buying dead.



30-Day Rule

Wait 30 days before luxury buys.

Most wants disappear.



15% Saving Rule

Save 15% of gross income for retirement.

Starting at age 25 for a secure future.



THE BIGGEST NFL CONTRACTS OF ALL TIME



VIA SPOTRAC

BOARDROOM

BY CONTRACT VALUE:

1

PATRICK MAHOMES



\$504.7M

(2026 - 2033)

2

JOSH ALLEN



\$330M

(2025 - 2030)

T-3

TREVOR LAWRENCE



\$275M

(2024 - 2030)

T-3

JOE BURROW



\$275M

(2023 - 2029)

5

BROCK PURDY



\$265M

(2025 - 2030)

HOT ASPHALT!

Air Temperature	Asphalt Temperature
--------------------	------------------------

77°	125°
-----------	------

86°	135°
-----------	------

87°	143°
-----------	------

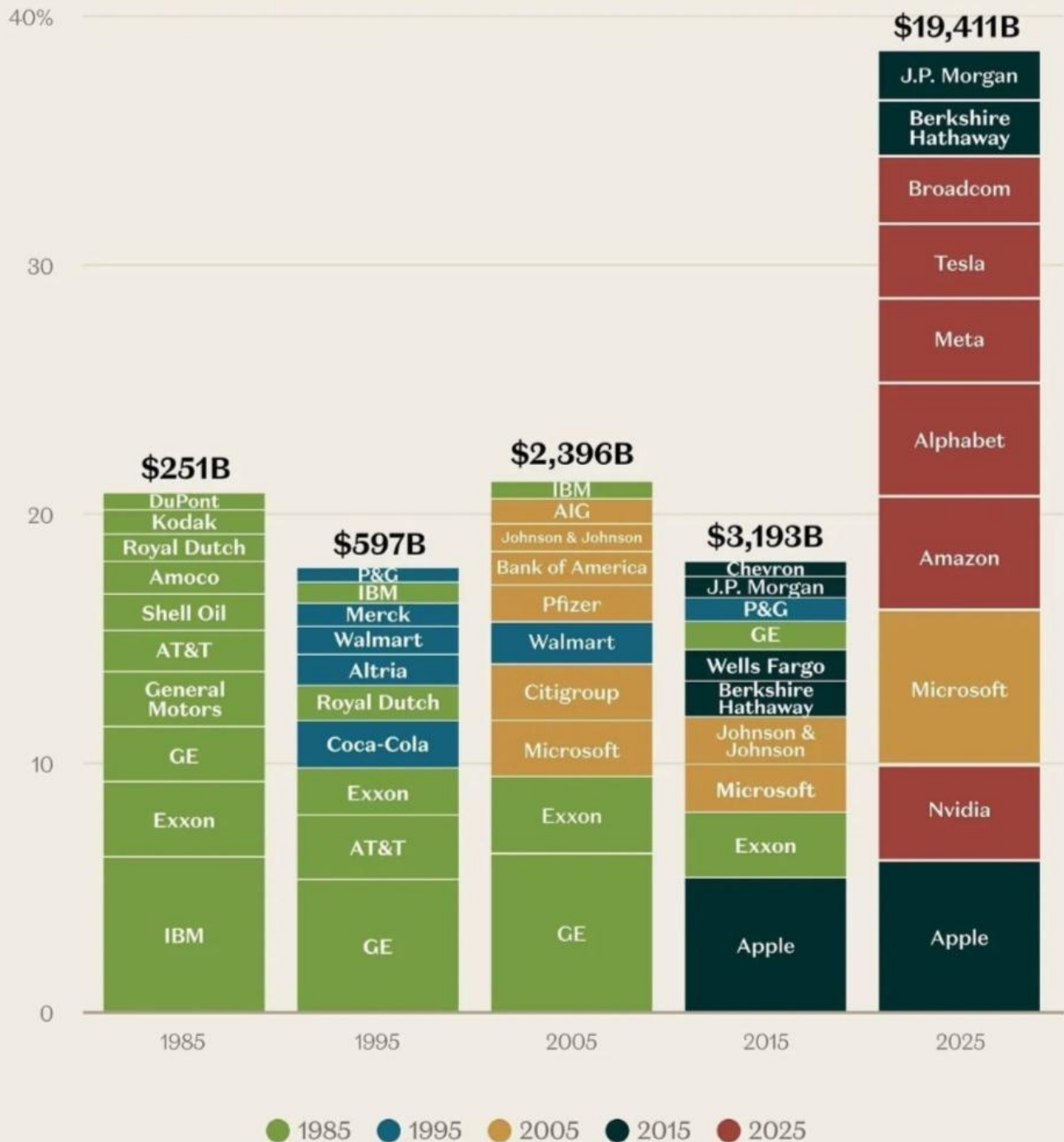
At 125° skin destruction can occur in just 60 seconds. Always check the asphalt prior to allowing your pet to walk on it.

Paws will get burned.

TIP: If it's too hot for your bare feet it's too hot for theirs!

Top Ten Companies by Decade

Percent of S&P 500 market capitalization as of the first day of the indicated year



Source: Bloomberg, Standard & Poor's, J.P. Morgan Asset Management
Companies are organized from highest weight at the bottom to lowest weight at the top. Past performance is no guarantee of future results. Guide to the Markets—U.S. Data are as of March 30, 2026.